

## AGENDA

- 1:00 p.m.     **Ice-breaker activity**—Rachel Bisesi, North Carolina Coastal Federation, Introductions, Christine Miller, North Carolina Coastal Federation
- 1:10 p.m.     **Welcome**- Todd Miller, Executive Director, North Carolina Coastal Federation, and Chris Darnell, US Fish and Wildlife Service
- 1:15 p.m.     **Large-scale Restoration Priorities Initial Overview**, Dave Pietruszynski, North Carolina Coastal Federation consultant
- Purpose of group
  - Provide background on priority map development
  - Solicit other information available
- 2:00 p.m.     **Introduction to the project and work done to date**
- Agency priorities and geographic scopes gathered to date
  - Demonstrate matrices. Other information necessary? (group participation)
  - Preliminary discussion and/or agreement about areas to be selected--Todd Miller
- 2:40 p.m.     **Feedback and Facilitated Discussion on Proposed Projects**, divide into Sub-groups for Mtg. 2  
--Dave Pietruszynski, Christine Miller
- 2:45 p.m.     **Wrap-up and Next Steps**- Christine Miller, North Carolina Coastal Federation
- 3:00 p.m.     **Adjourn**



North Carolina  
Coastal Federation  
*Working Together for a Healthy Coast*

# North Carolina Coastal Wetland Conservation and Restoration Working Group Meeting

01/25/2021



North Carolina  
Coastal Federation  
*Working Together for a Healthy Coast*

# First Working Group Mtg Goals

- ☐ Understand the rationale for working group – outcomes
- ☐ Review and decide on geographical extent
- ☐ Review various stakeholder mission, geography, and goals
- ☐ Provide additional information through feedback on the priorities for selecting projects
- ☐ Choose preliminary projects for further investigation
- ☐ Self-select into projects for next meetings

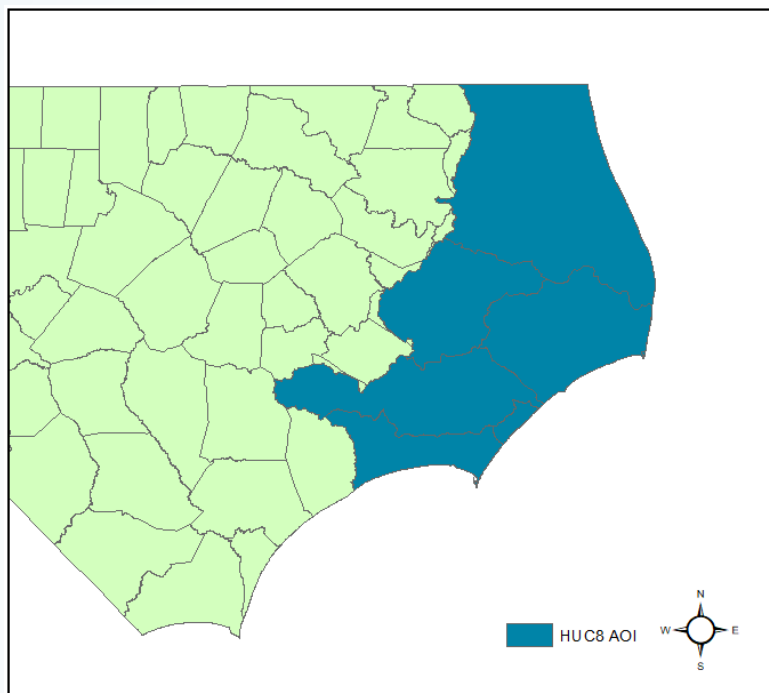


# Proposed Purpose of Group

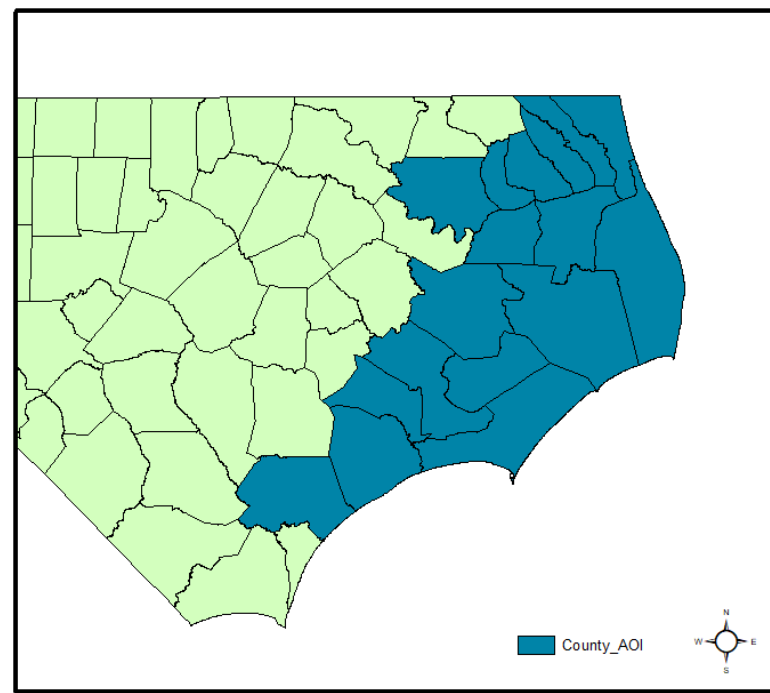
- ❑ Create regional conservation partnership focused on large-scale projects with a 5-yr action plan
- ❑ Based on successful history by NCCF and partners protect/restore:
  - Wetlands
  - Water Quality
  - Fishery Habitat
- ❑ Include stakeholder voices - landowners, farmers, foresters, gov agencies, scientists, and allied non-profits
- ❑ Develop funding strategy for large-scale natural resource conservation actions



# Geographic Extent of Working Group



Watershed (Subbasin) Perspective: Albemarle, Pamlico, Pamlico Sound, Lower Neuse, White Oak River



County Perspective: Currituck, Camden, Pasquotank, Perquimans, Chowan, Bertie, Washington, Tyrrell, Dare, Hyde, Beaufort, Pamlico, Craven, Carteret, Jones, Onslow, Pender

Source: NC DEQ, <https://data-ncdenr.opendata.arcgis.com/datasets/8-digit-huc-subbasins>, NC DOT <https://www.nconemap.gov/datasets/NC DOT::ncdot-county-boundaries>

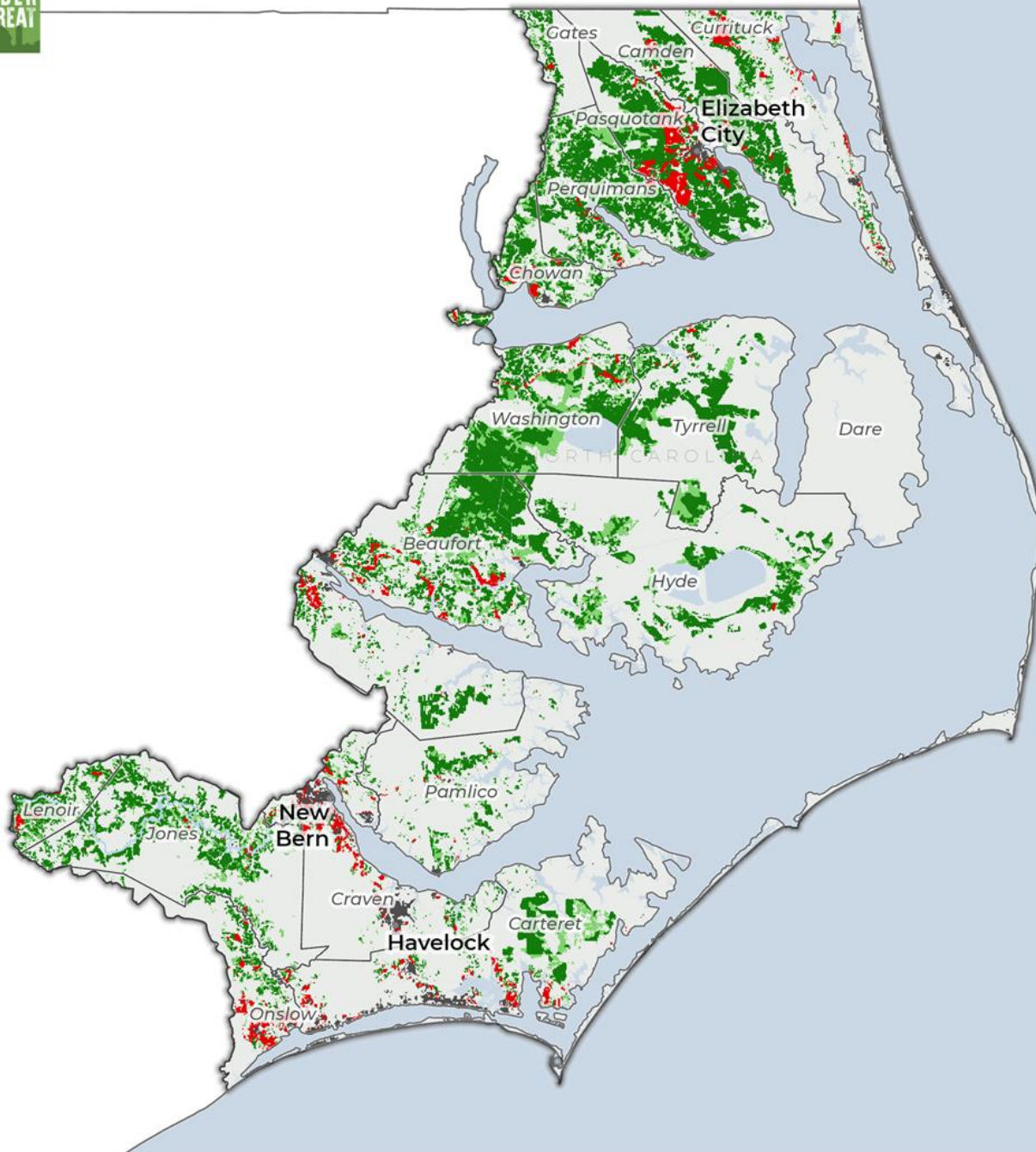


# Stakeholder Priorities

- ❑ Diverse set of stakeholders
- ❑ Sample geographical priorities from major stakeholders
- ❑ Overlay priorities (GIS), seek areas with overlapping interests

Interest Group	Representative
Farming	American Farmland Trust
Forestry	NC Forest Service
Habitat and Wildlife Cons.	US FWS, SA Landscape Cons. Cooperative
Land Trust	NC Coastal Land Trust
Water Quality	NC DEQ
Native Bird Cons.	Atlantic Coast Joint Venture
Military	US DOD
Coastal Wetlands	NCCF





## Conversion of non-federal farmland to UHD and LDR land uses from 2001-2016.

■ Conversion of agricultural land to UHD and LDR land uses

### Farmland\* that is:

■ Above state median PVR\*\*

■ Below state median PVR

■ Urban areas

■ Federal, forest, and other lands

\*Farmland is composed of cropland, pastureland, and woodland associated with farms.

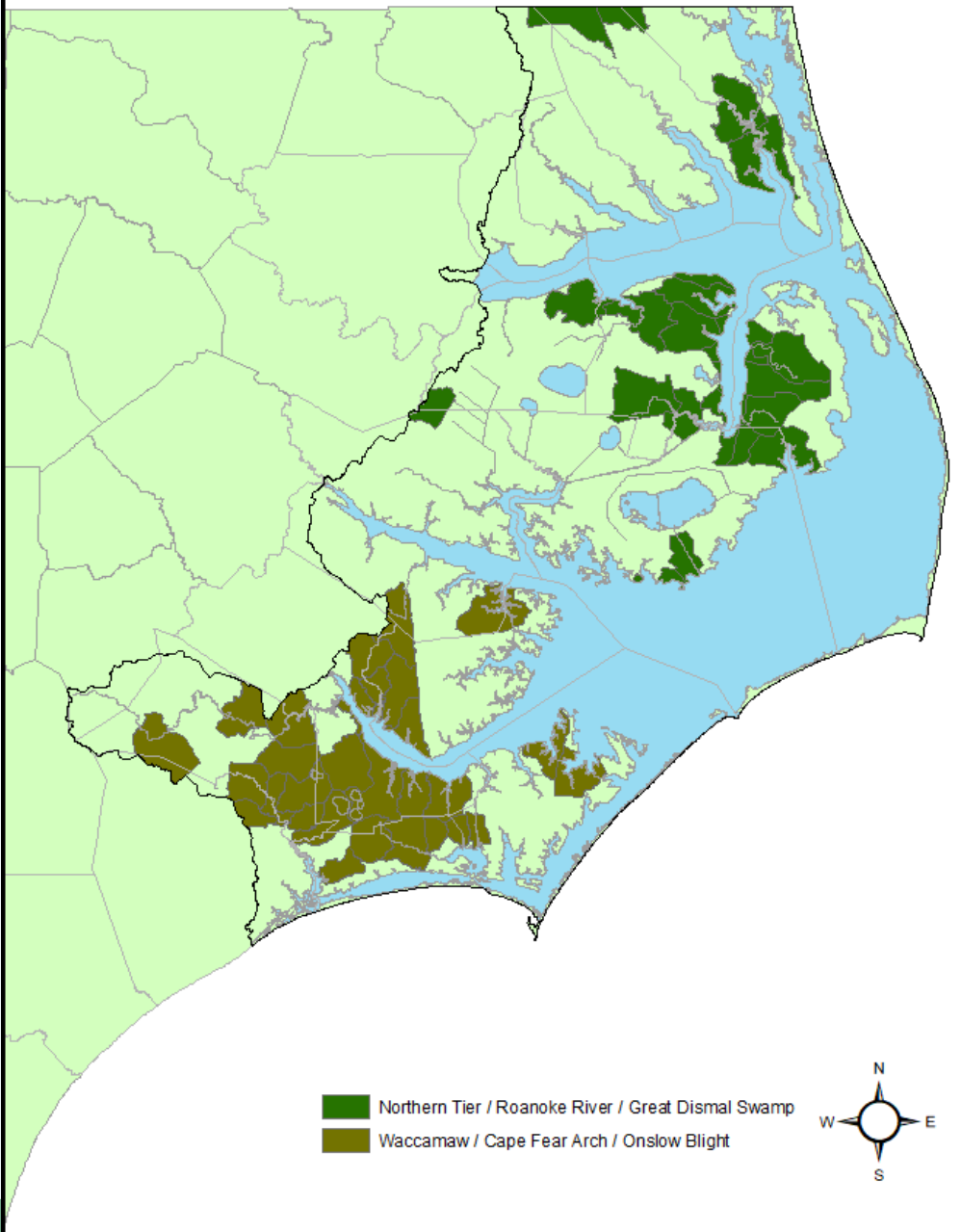
\*\*Our Productivity, Versatility and Resiliency (PVR) index helps identify high-quality agricultural land.

American Farmland Trust makes no warranties as to the suitability of the data and information found here for any particular purpose or user. Data and information may not be used for any commercial purpose. The spatial data presented here may be used as an informative inventory of agricultural land use, land quality, and specific types of conversion. Please refer to the report and technical documentation for an explanation of the methods used to develop the data and the limitations of the data. For more information or suggestions regarding the data on this site, please contact AFT's Farmland Information Center: [www.farmlandinfo.org](http://www.farmlandinfo.org) or (800) 370-4879.



# US Forest Service Forest Legacy Program Eligibility

- ☐ Protection of environmentally important forests throughout US
- ☐ Target areas threatened by non-forest uses
- ☐ Two forest regions are a focus for NC FS within AOI

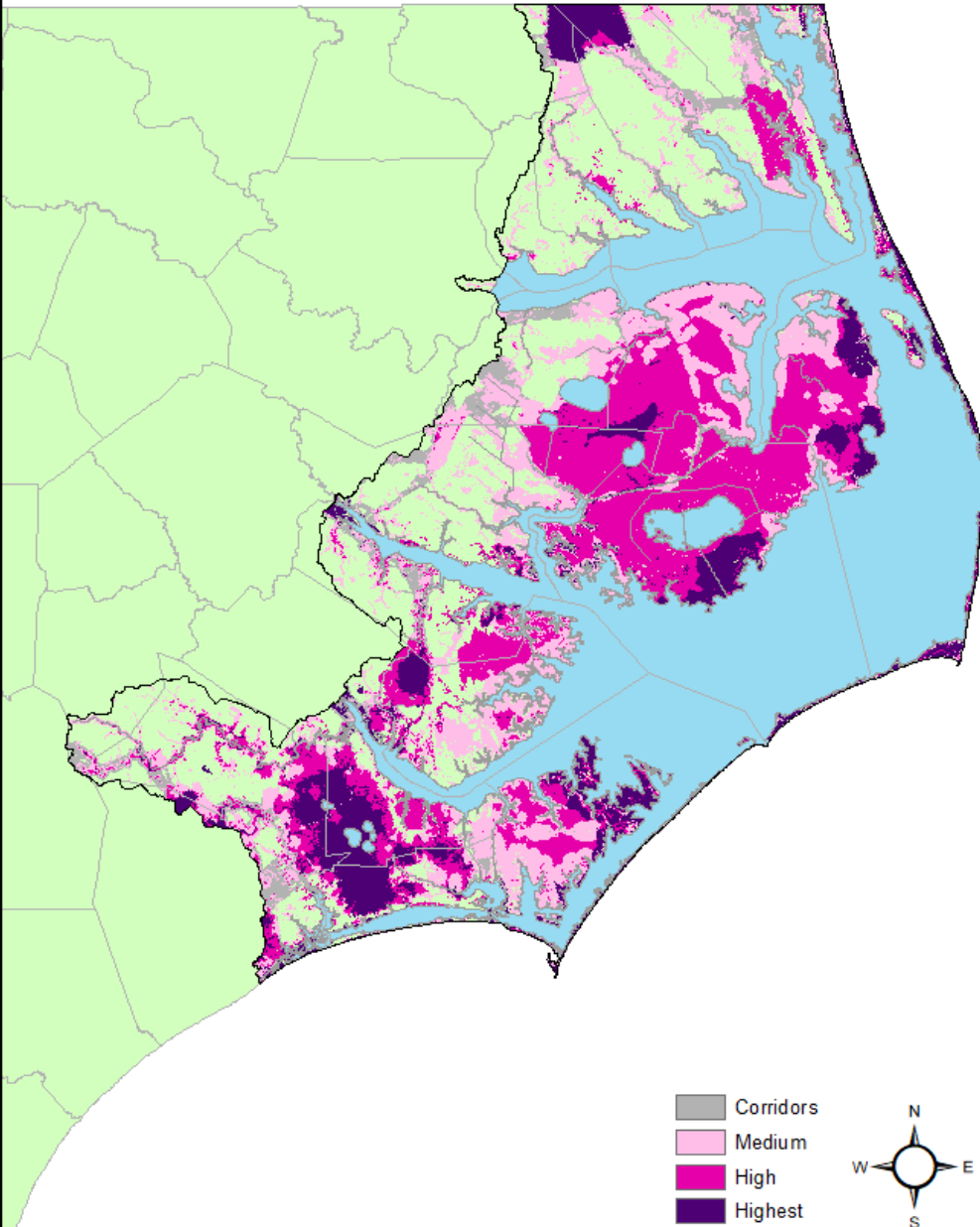


Source: NC Forest Service 2009 data



# South Atlantic LCC – Conservation Blueprint

- ☐ Six-state cooperative facilitating conservation
- ☐ Provide an adaptive blueprint that guides conservation of natural and cultural resources
- ☐ Based on 30 ecological indicators (terrestrial, marine, freshwater)



Source: South Atlantic Landscape  
Conservation Cooperative

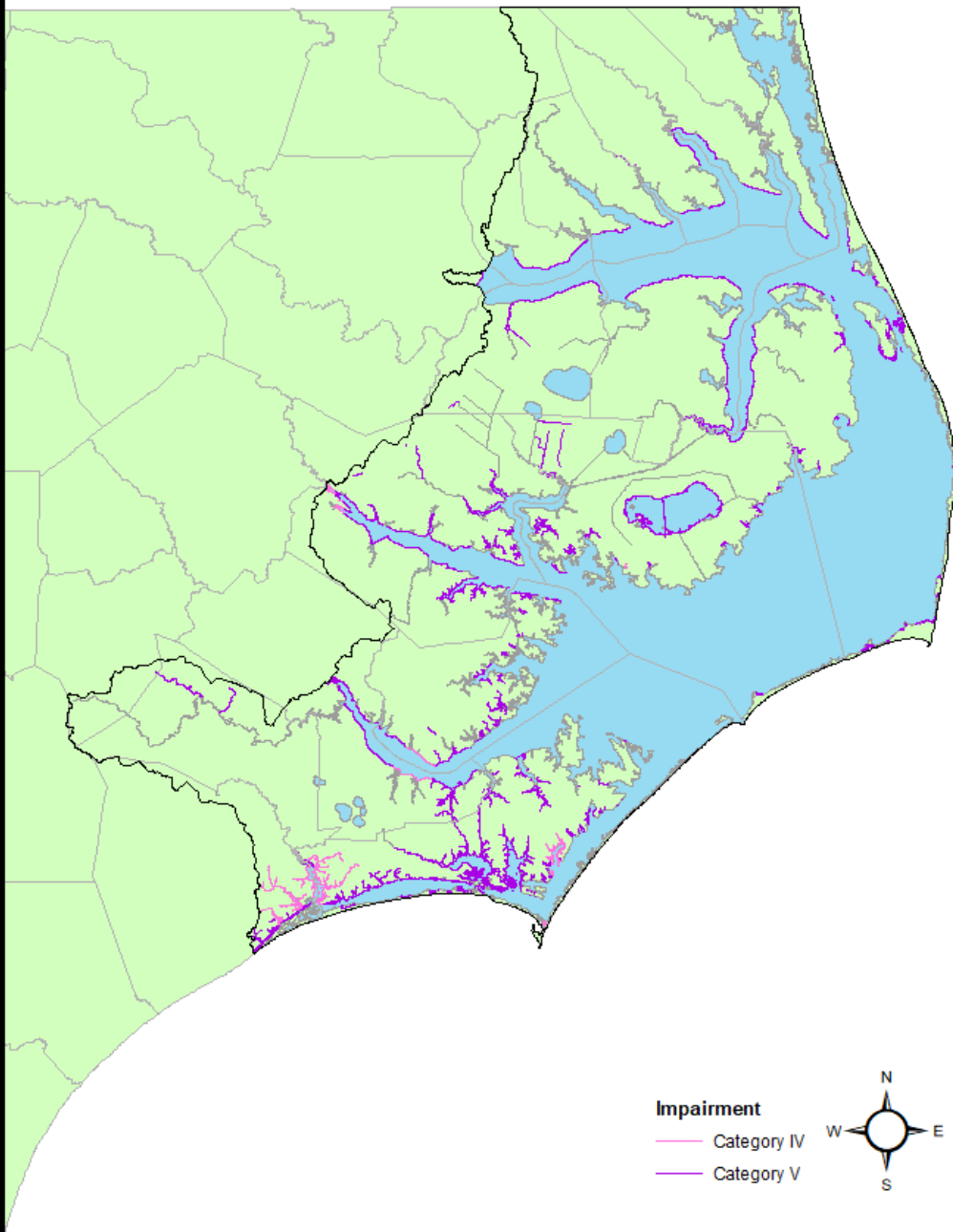
# North Carolina Coastal Land Trust

- ❑ Conserve natural areas and working landscapes
- ❑ Overlay - target areas based on ecological significance, biodiversity, adjacency, size, public use, and threatened land

10

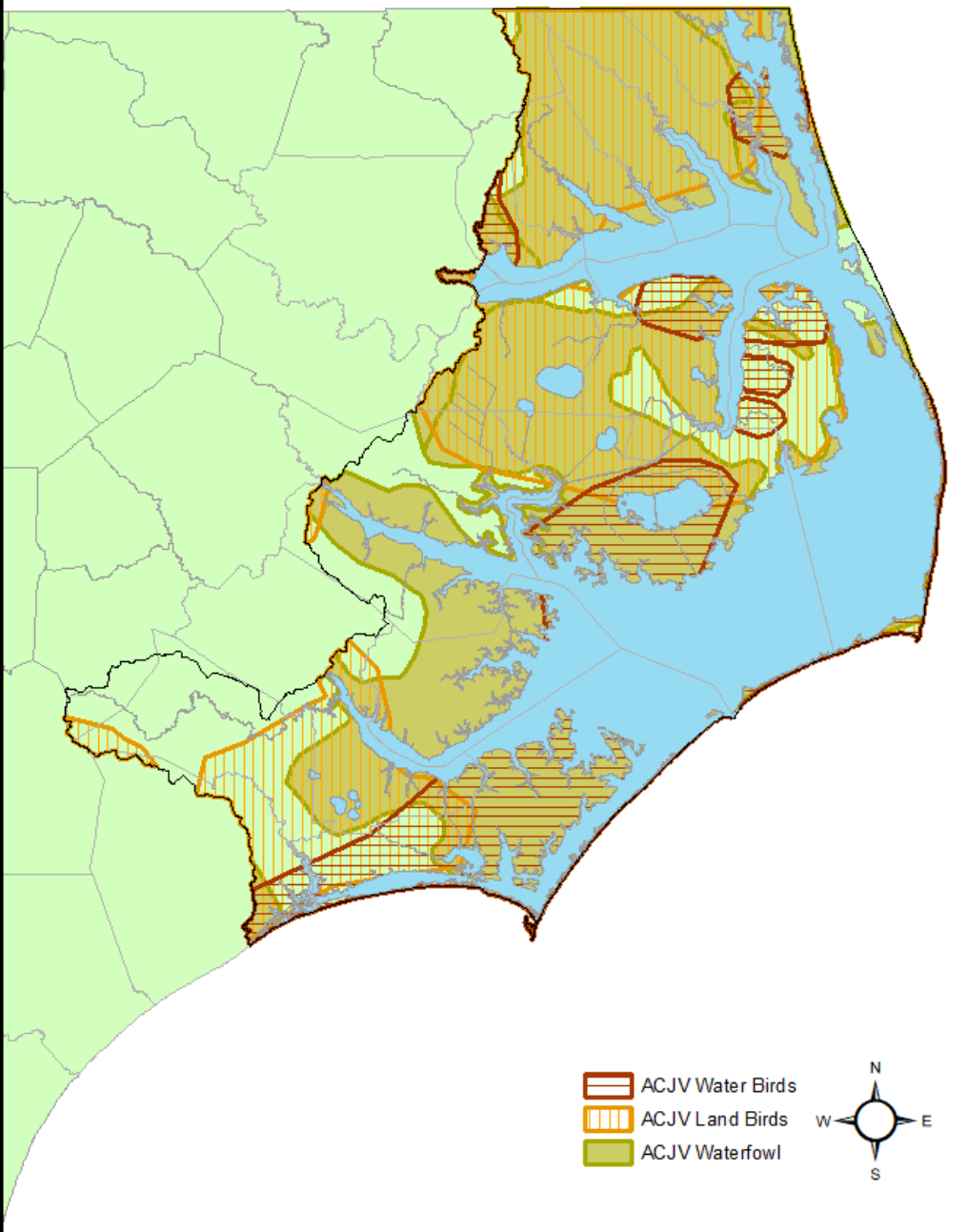


Source: North Carolina Land Trust



## NC DEQ Impaired Waters

- ☐ Impaired waters as defined by Section 303(d) of the Clean Water Act
- ☐ This layer is added after all other interest layers are combined
- ☐ Lands upstream of these waters assumed to be cause of impairment



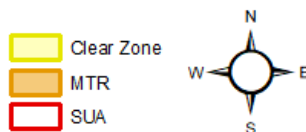
## Atlantic Coast Joint Venture – Native Bird Habitat

- ☐ Sustain native bird populations and habitat
- ☐ Includes high-priority threatened coastal species
- ☐ Emphasis on Saltmarsh Sparrow, Black Rail, and American Black Duck

# DOD Priority Areas Surrounding Military Installations

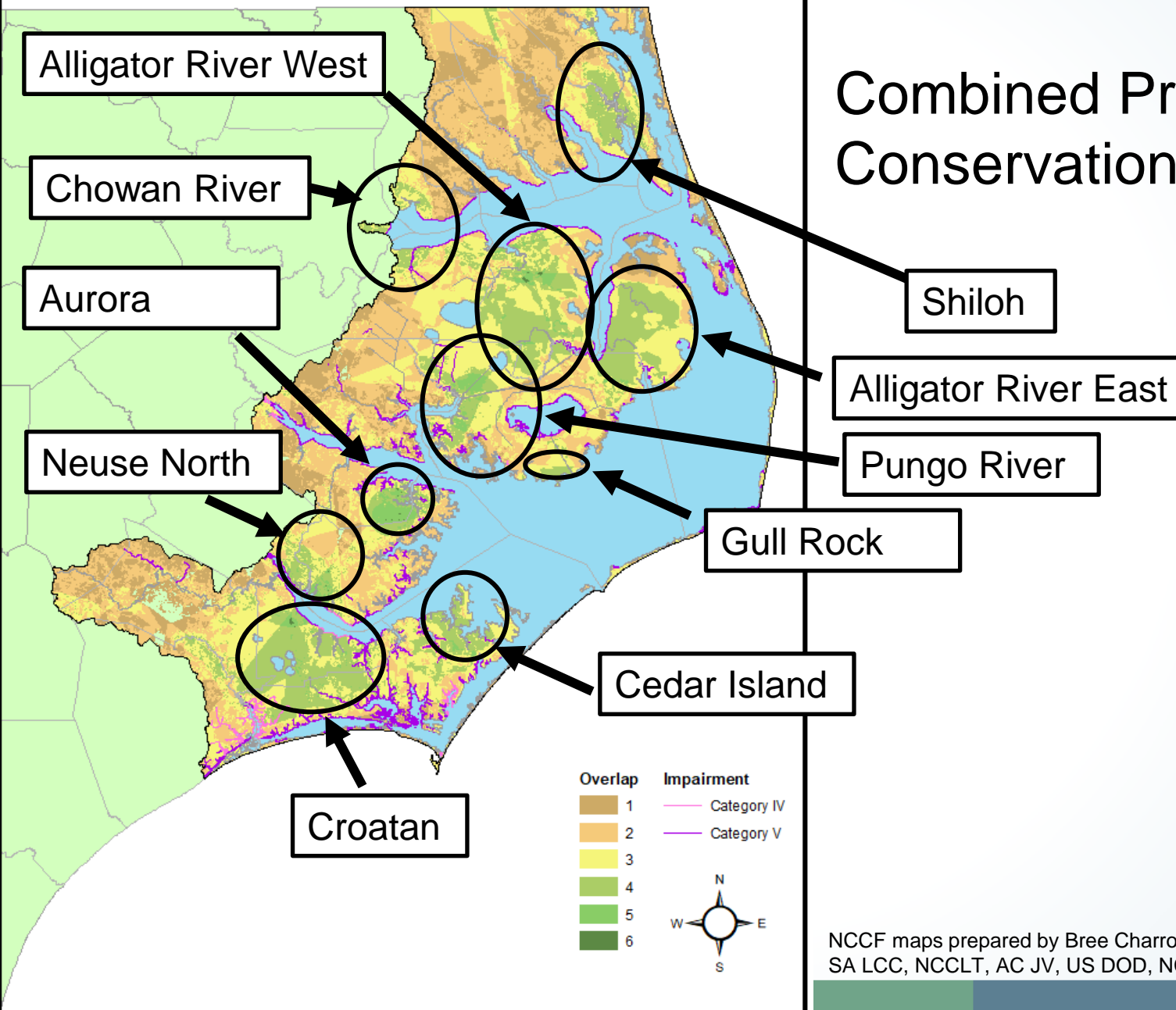
- ☐ Military readiness requires training
- ☐ Protection of land and air space required – Special Use Airspace, Military Training Routes, Clear Zones
- ☐ Readiness and Environmental Protection Integration Program (REPI)

13



Source: DOD REPI interactive map hosted by Texas A&M, managed by Booz Allen Hamilton <https://repimap.org/>

# Combined Priorities Conservation Index Map



# Next Step: Project-Specific Interests

- ❑ Regional maps show broad interest overlap
- ❑ Site specific projects have detailed impacts and benefits
- ❑ Develop a benefits/stakeholder cross-reference for selected projects





# Benefits/Stakeholder Interest Spreadsheet

[illegible]

# Benefits/Stakeholder Interest Spreadsheet

[illegible]

up with  
t that has  
verlap,  
nt benefits

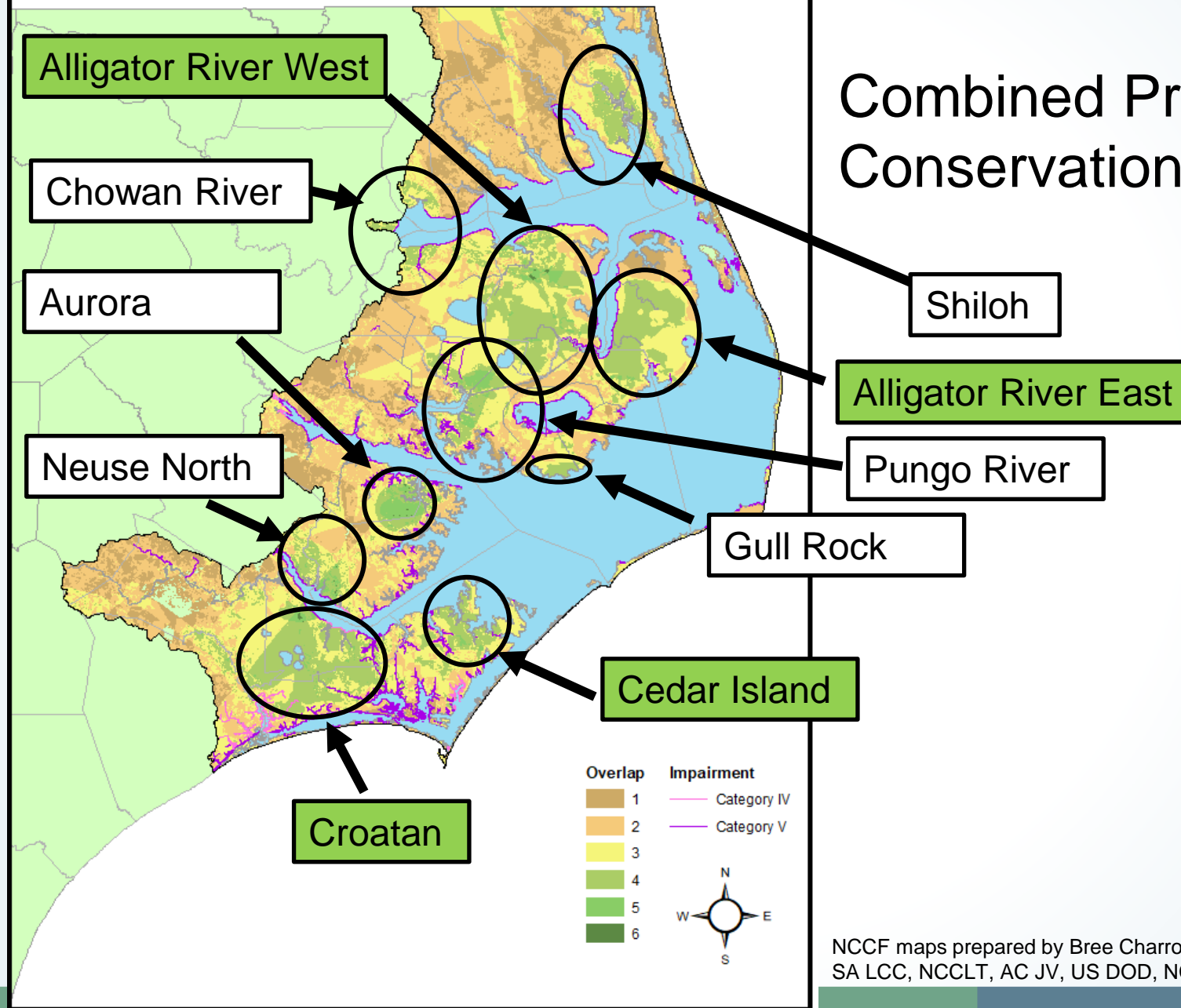
# DISCUSSION OF PRELIMINARY PROJECTS

# Selecting Preliminary Projects

- ☐ Based on the combined interest GIS analysis, we found X areas of greatest interest to the stakeholders.
- ☐ We polled you to determine the top choices among those areas.
- ☐ Todd then described the projects within those top choice areas
- ☐ Now we're asking you to pick one of those projects to sub-group on for the next meeting.



# Combined Priorities Conservation Index Map



# Next steps

## Results

Two to three large-scale, multi-million-dollar coastal wetland restoration projects over the next five years, that:

- are vetted, ground-truthed and supported by multiple partners
- have willing sellers
- are the appropriate scale of projects for the group
- have identified project leads, partners and funding targets
- are ready to move forward with grant applications in 2022, 2023

# Next steps

## Subgroups

- Christine will send out contact information to each subgroup
- Meet via phone, email or video at least once between meetings 1 and 2
- Choose a person to organize and document groups' communication
- Identify other information needed and specific areas that need more research
- Meeting 2: Late April/early May--poll within two weeks





North Carolina  
Coastal Federation  
*Working Together for a Healthy Coast*

**[www.nccoast.org](http://www.nccoast.org)**

3609 N.C. 24, Newport, NC 28570 252.393.8185

<https://www.nccoast.org/regional-conservation-partners-working-group/>

Christine Miller [christinem@nccoast.org](mailto:christinem@nccoast.org) 252-269-7729

Dave Pietruszynski [dpietruszynski@gmail.com](mailto:dpietruszynski@gmail.com) 512-436-5039