

Panel: Resilient Coastal Tourist Communities



Dawn York
Moffatt & Nichol

Dawn York is a senior coastal scientist and project manager for Moffatt & Nichol. She has been involved in the design, preparation, coordination, and adaptive management of large-scale, multi-disciplinary coastal projects for over 17 years. Her experience includes environmental permitting requirements for large-scale beach nourishment programs. In addition to her position as a Coastal Scientist, Mrs. York serves as the Coordinator for the Cape Fear River Partnership, a coalition of federal, state, industry, private, nonprofit organizations working towards the restoration of anadromous fish species in the Cape Fear River watershed. Mrs. York has raised \$4 million towards the improvement fish passage of endangered and federally managed anadromous fish species at the locks and dams on the Cape Fear River.



Living with Water Master Plan

Battleship NORTH CAROLINA



Property Boundary

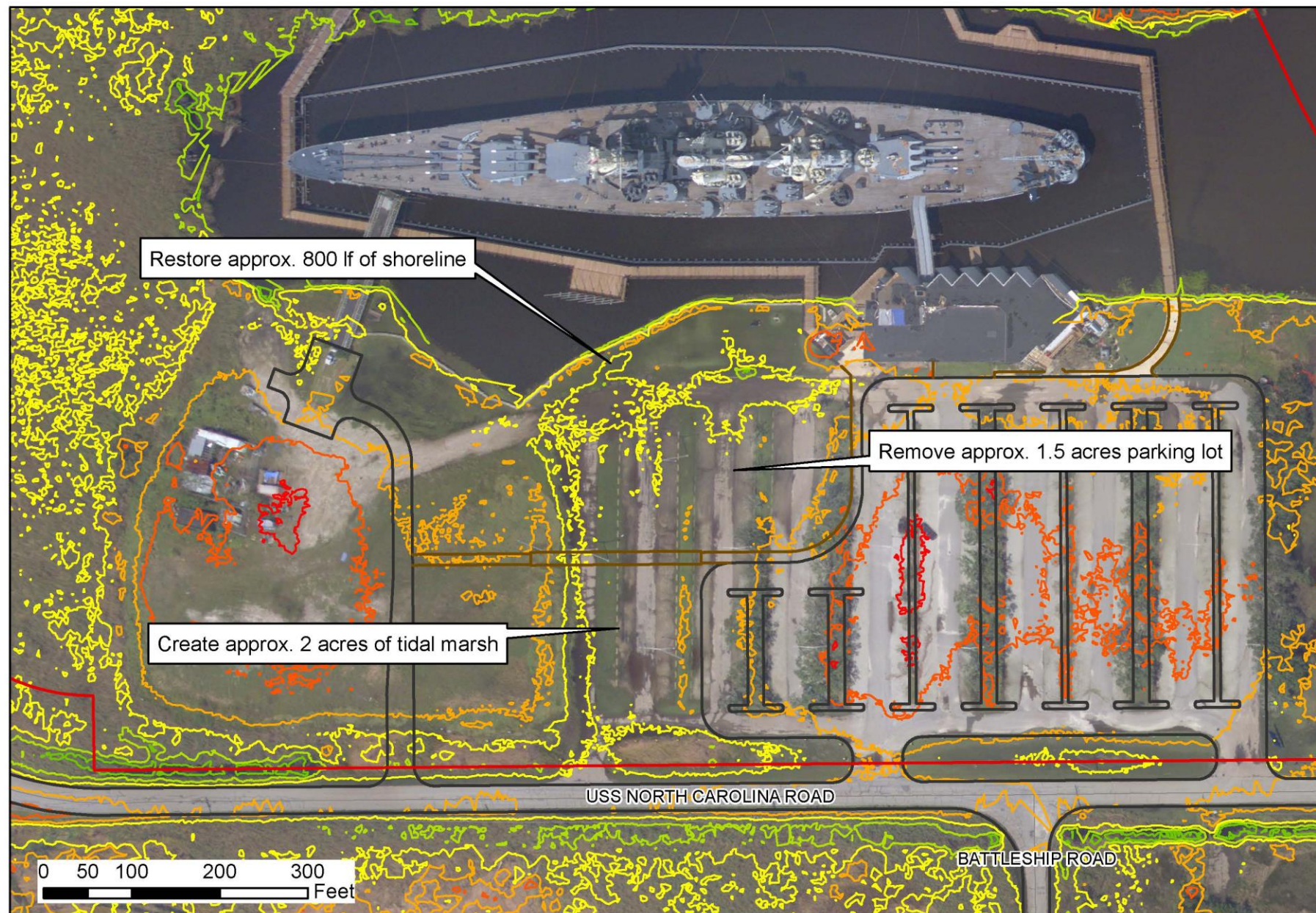
Road/Parking Lot

Shoreline/Tidal Marsh to be Restored

Walkways

Contours (ft NAVD88)

-1 2 5
0 3
1 4



moffatt & nichol

LEGEND

LIVING WITH WATER MASTER PLAN

- HARBOR LINE
- NAVIGATION CHANNEL LINE
- 1. USS NORTH CAROLINA VISITOR CENTER
- 2. SECU MEMORIAL WALKWAY
- 3. SIGNAGE AND WAYFINDING
- 4. VISITOR ACCESS RAMP
- 5. MAINTENANCE AND SERVICES ACCESS RAMP
- 6. EXISTING SURFACE PARKING IMPROVEMENTS (RAISE ELEVATION BY +/- 1 FT)
- 7. EXISTING SITE SERVICES AND FACILITIES
- 8. PEDESTRIAN BRIDGE & WALKWAY
- 9. CONSTRUCTED TIDAL WETLAND
- 10. LIVING SHORELINE
- 11. DRAINAGE CONTROL STRUCTURE
- 12. PROPOSED FUTURE GREENSPACE AREA



BATTLESHIP WILMINGTON WILMINGTON, NC



moffatt & nichol

04.01.2019

LIVING WITH WATER MASTER PLAN

GRAPHIC SCALE IN FEET
RATIO 1"=50' @ 22x34
0 25' 50' 100' 200'



moffatt & nichol