

## Panel: Strengthening our Roots



**Kris Noble**  
Hyde County Manager

Kris Cahoon Noble has been the Hyde County Manager since 2018. Noble has worked with Hyde County since 2008, most recently as Assistant County Manager and prior to that as Hyde County's Planner and Economic Development Director. Noble has coordinated projects in drainage, water, wastewater, and construction of municipal and community facilities. She currently serves on the Coastal Resources Advisory Council. A native of Swan Quarter, Kris attended East Carolina University where she received a Bachelor of Science in Business Administration with a concentration in Entrepreneurship and Small Business Management and a Master's of Business Administration. Noble is also a graduate of the UNC School of Government's Municipal & County Administration course and is UNC School of Government Fellow. Noble is responsible for managing one of North Carolina's most rural coastal counties with a principal goal of creating hazard resilient communities. Noble works to protect, maintain and grow Hyde County's core economic sectors which are agriculture, commercial fishing and tourism while providing essential services to the citizens and visitors of Hyde County.



# Strengthening our Roots:

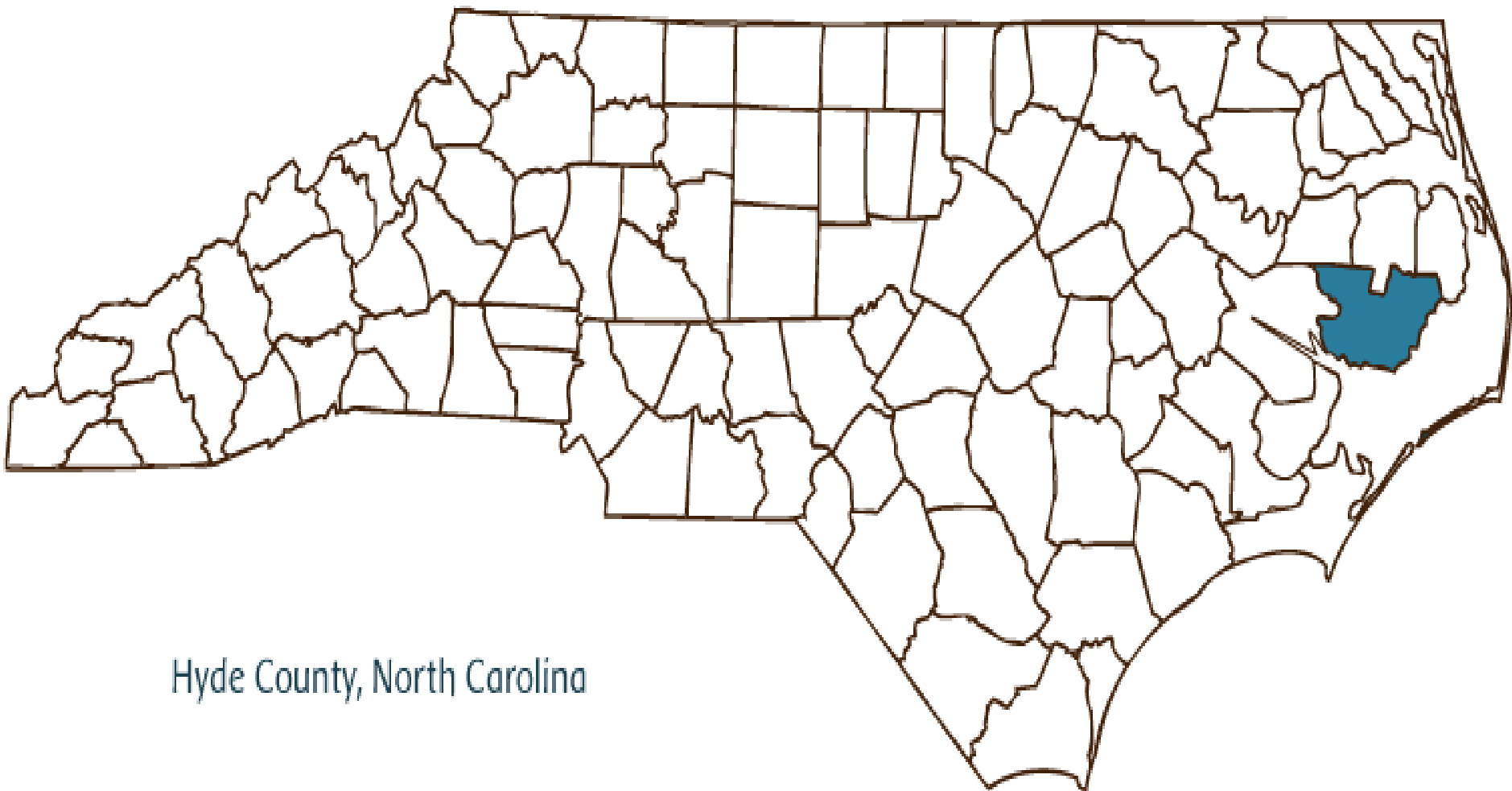
Maintaining Our Natural and Working Lands Through Nature Based  
Active Water Management

Kris Cahoon Noble  
2019 NC Resilience  
Summit



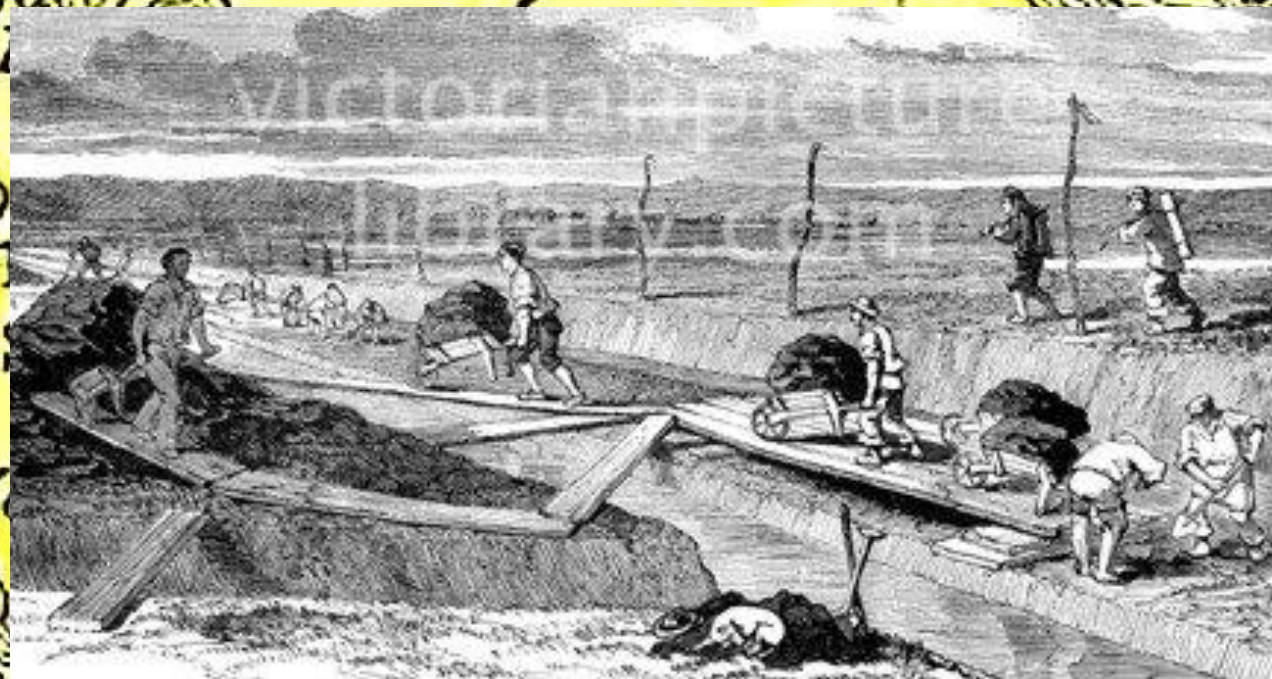
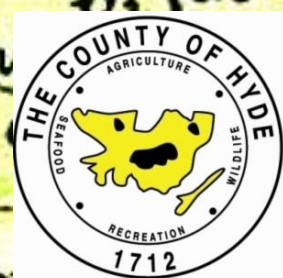
How important is a strong root structure to healthy plants?





Hyde County, North Carolina







Lake Phelps

PETTIGREW  
STATE PARK

Pungo Lake

45

Pungo N.W.R.

Alligator  
Lake

Hyde County

94

Lake Mattamuskeet

L. Mattamuskeet N.W.R.

Swanquarter

Swanquarter N.W.R.

Pamlico Sound

CAPE HATTERAS  
NATIONAL  
SEASHORE

Pamlico Sound

Ocracoke

Ocracoke Inlet

Ocracoke Island

Atlantic Ocean

264

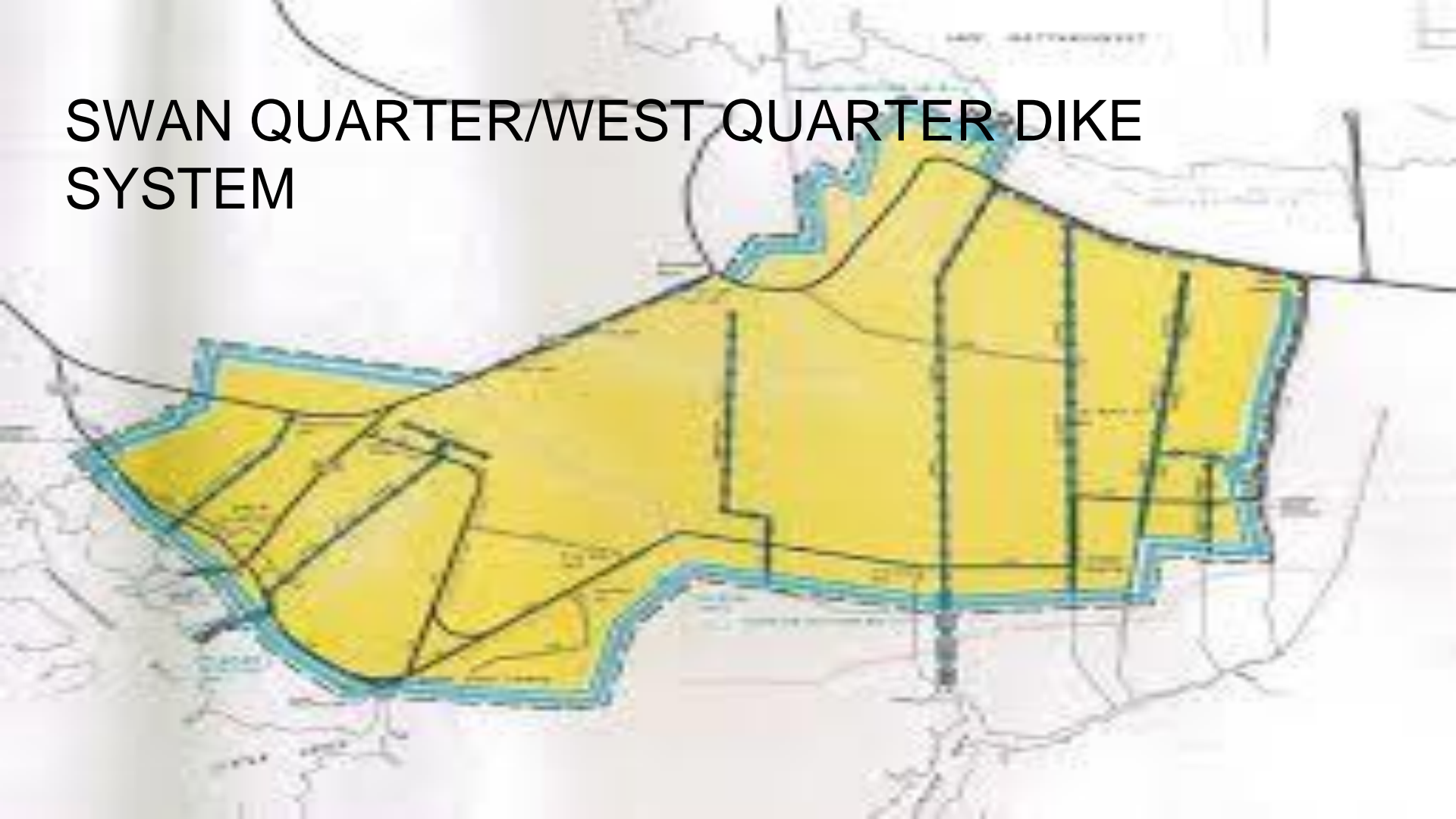
99

33

304

12

# SWAN QUARTER/WEST QUARTER DIKE SYSTEM





the DIKE Road 45 North ☺  
will be Closed Monday for the  
Asphalt crew. When they finish  
the DIKE will be DONE







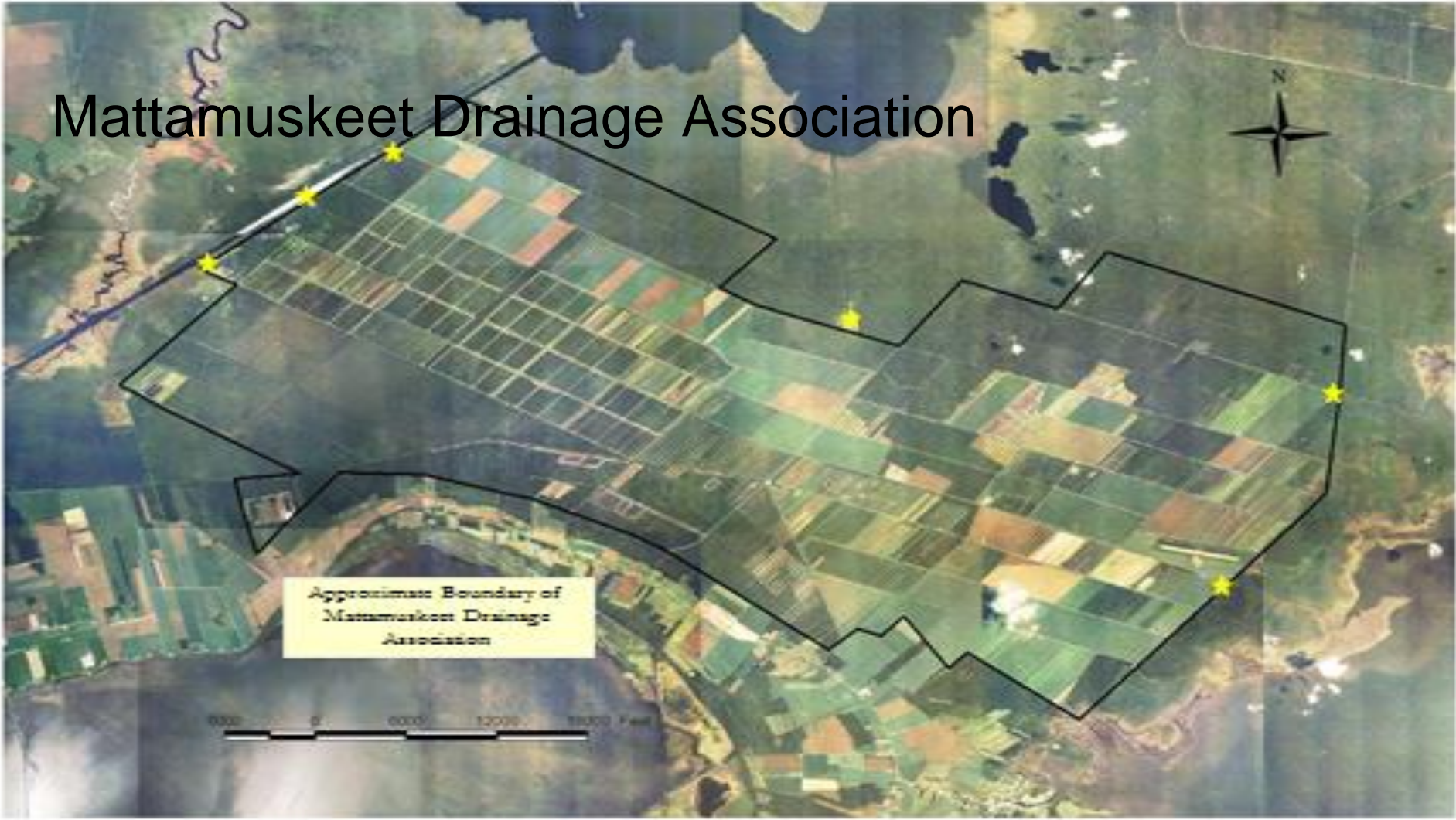


# Mattamuskeet Drainage Association



Approximate Boundary of  
Mattamuskeet Drainage  
Association

0000 0 6000 12000 18000 Feet





# Fairfield Drainage District - Drainage District No. 7







# Lake Mattamuskeet Restoration





# Housing Elevations



Mitigate our Critical Facilities





# Partnerships and a Commitment to our Goals







# Partnerships





Kris Cahoon Noble  
Hyde County Manager  
[knoble@hydecountync.gov](mailto:knoble@hydecountync.gov)

