

A New Mission: Strategies to Reduce Climate Impacts on Military Operations in Coastal North Carolina



Hervey McIver
The Nature Conservancy

Hervey McIver has worked 24 years for the North Carolina Chapter of the Nature Conservancy. His primary focus is on protecting conservation lands, primarily in southeastern North Carolina. In addition, he is involved with conservation planning, fundraising, and land management. Hervey has been engaged from the beginning with the Onslow Bight Conservation Forum, and he co-chaired it for many years. Many of his land acquisition projects involved the protecting lands important to the Marine Corps Base Camp Lejeune and the Army's Fort Bragg. He received a Bachelor of Arts from Williams College, with a concentration in Environmental Studies. Hervey resides in Hillsborough, NC.

Conservation in the Onslow Bight Region

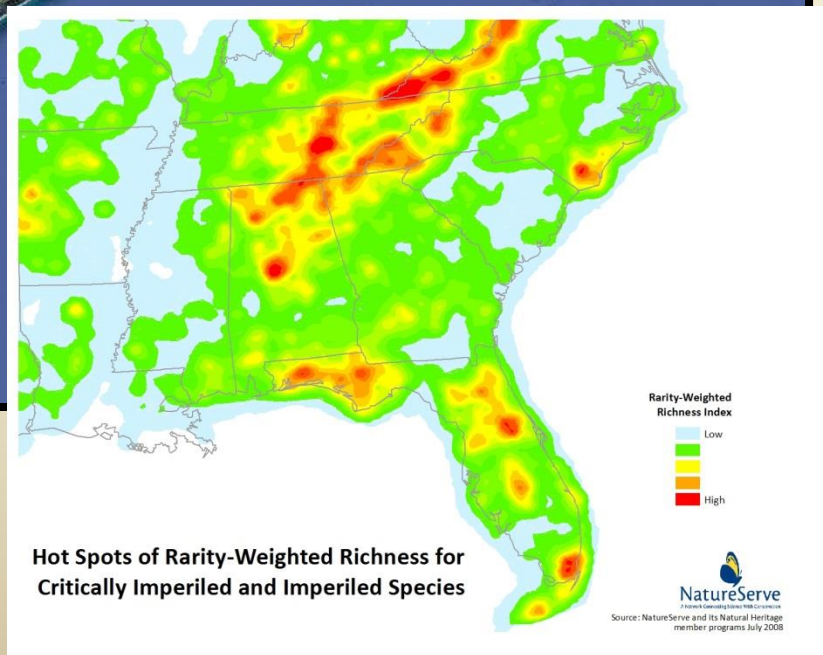
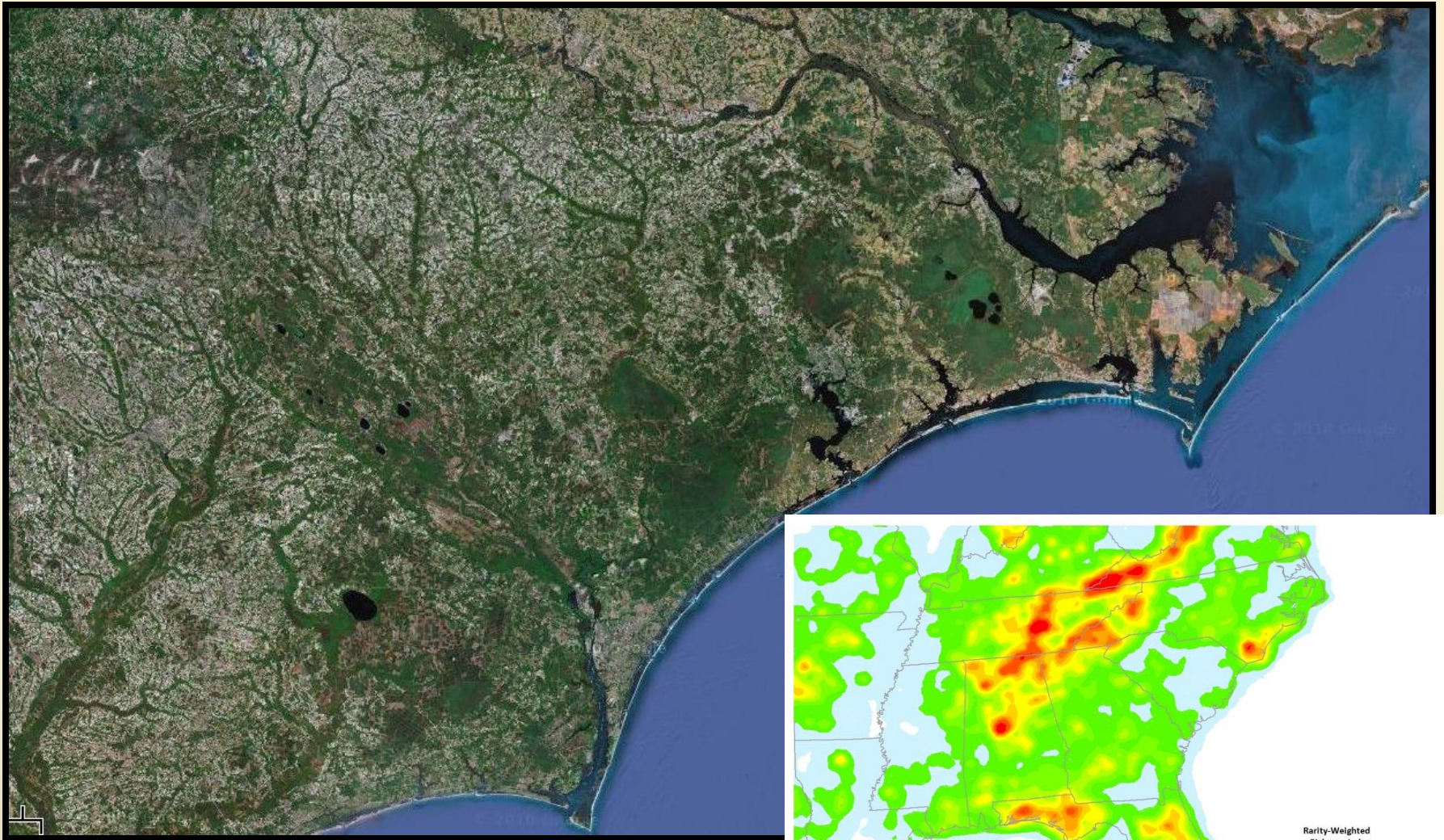
Presentation to the

Partnership for Southern
Forestland Conservation

Hervey McIver, TNC
Onslow Bight Project Director

June 21, 2013





Onslow Bight Conservation Forum

- 2001 - Early discussions with the Marine Corps
- 2003 - Memorandum of Understanding

17 Members:

Federal – MCB Camp Lejeune, MCAS Cherry Point, MCAS New River,
US Fish & Wildlife Service, US Forest Service (Croatan NF), NRCS

State – Dept. of Environment & Natural Resources, Wildlife Resources
Commission, Dept. of Transportation, NC Forest Service

NGO's – The Nature Conservancy, NC Coastal Land Trust, NC Coastal
Federation, Endangered Species Coalition, Ducks Unlimited, The
Conservation Fund, Coastal Plain Conservation Group

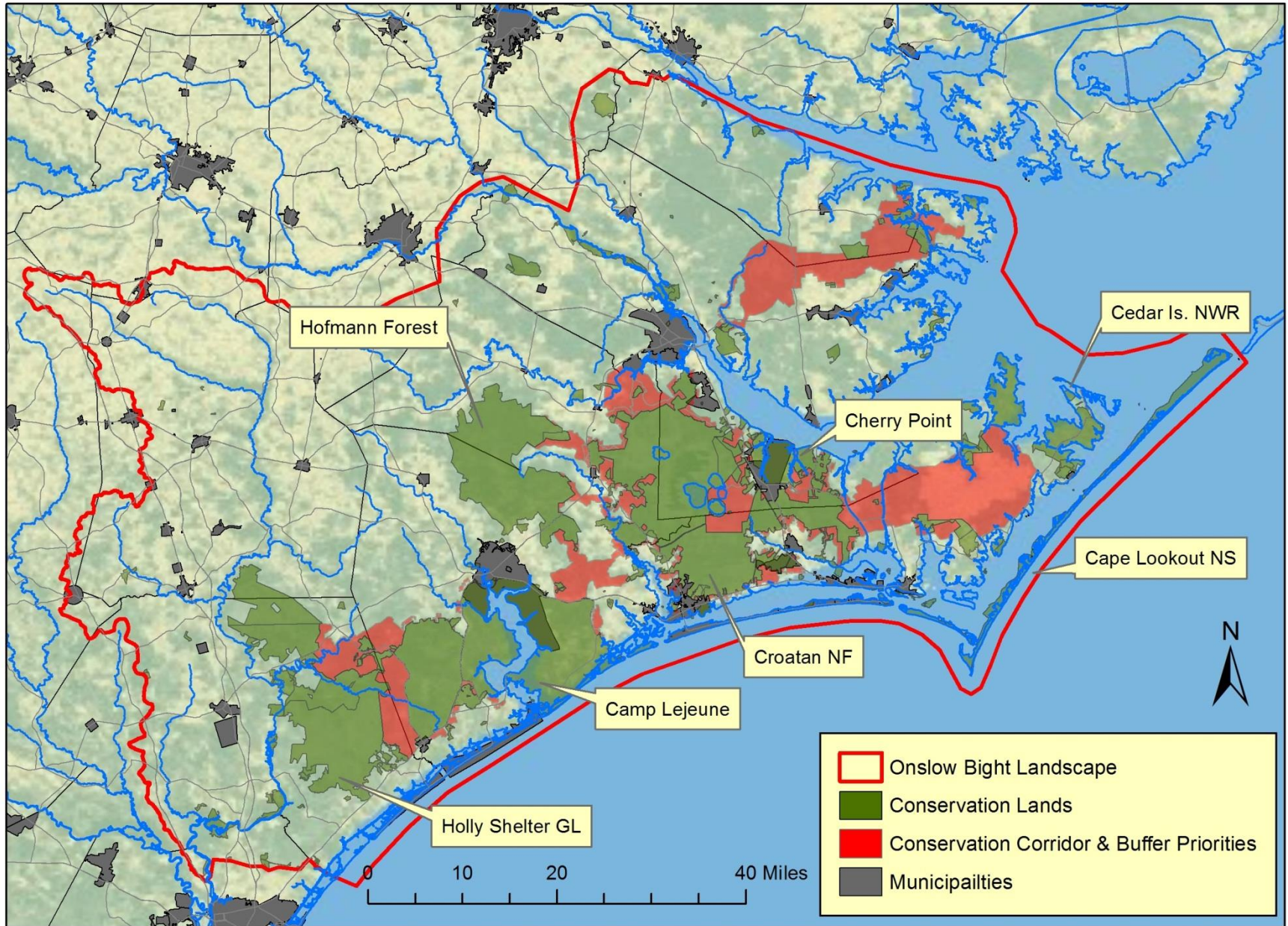
Onslow Bight Conservation Forum

Memorandum of Understanding

- Mission: *“To provide for open discussion among the participants concerning the long-term conservation and enhancement of biological diversity and ecosystem sustainability throughout the Onslow Bight Landscape compatible with the land use, conservation and management objectives of the participating organizations and agencies.”*

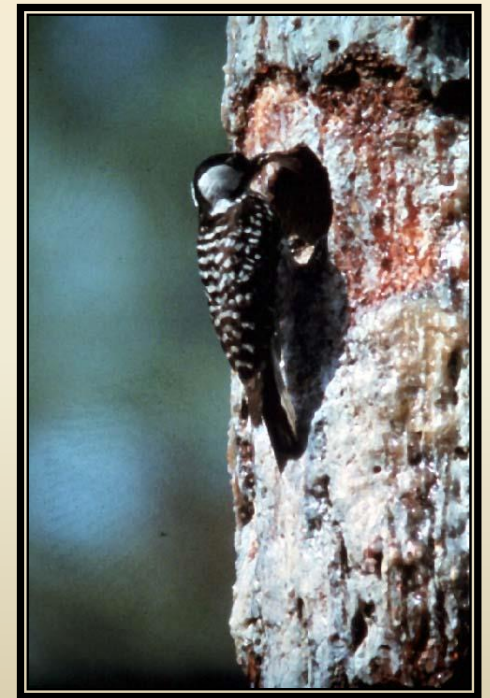


Onslow Bight Conservation Landscape



Conservation Targets

- Longleaf Pine and Pocosin Ecosystems
- Unique Wetland Hardwood Forests
- Mesic and Dry Hardwood Forests
- Small Depression Wetlands and Natural Lakes
- Floodplain Forests
- Maritime & Coastal Fringe Forests
- Niche Habitats (e.g. Marl Outcrops)
- Barrier and Estuarine Islands
- Estuarine and near-shore Marine Habitats
- Freshwater Aquatic Habitats
- Special Animal Habitats



Threats to Terrestrial and Freshwater Wetland Conservation Targets

1. Habitat alteration & loss due to land use changes
2. Fragmentation of existing habitat
3. Habitat loss and fragmentation due specifically to the lack of frequent, appropriate burning
4. Overexploitation of species
5. Hydrologic alteration
6. Poor and/or declining water quality
7. Invasive and exotic species
8. Climate change



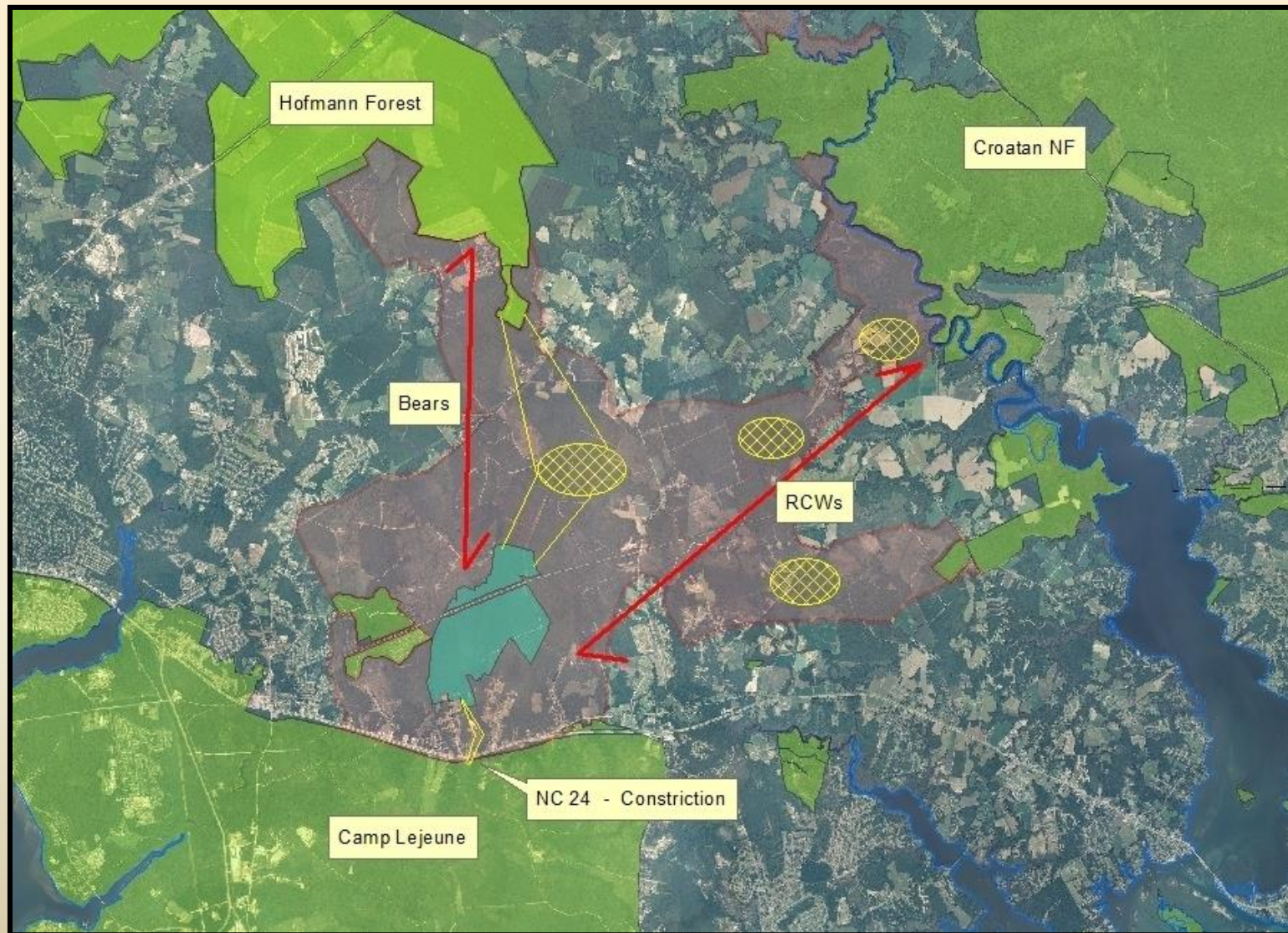
Conservation Strategies

Build, Buffer and Connect Core Areas

1. Priority Acquisitions
2. Conservation Management including Prescribed Fire
3. Encourage Good Private Lands Management
4. Design Roads for Wildlife
5. Engage in Local and Regional Planning
6. Cooperate in Research
7. Education and Outreach

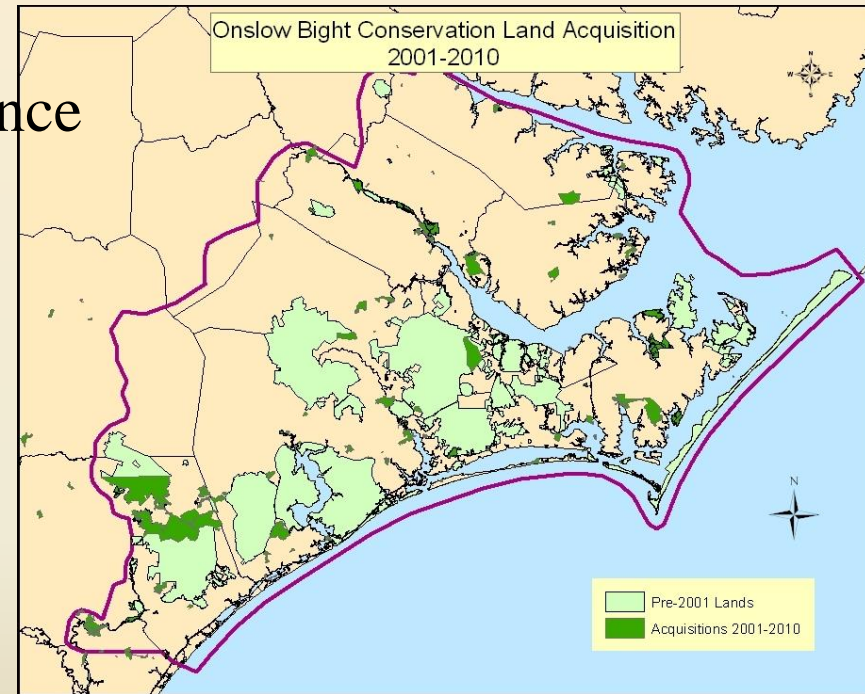


Corridor Design



Notable Accomplishments

- Since 2001 over 67,000 acres land valued at \$96 million have been protected through fee simple or easement acquisition.
- Onslow Bight Stewardship Alliance
- US 17 Wildlife Underpass
- Multiple Grants:
NAWCA
Partners for Fish & Wildlife
NFWF Longleaf
Stewardship Grant
- Recovery & Sustainment Program (RASP)



Questions?

