

Helping Nature Help Us: Co-Benefits of Environmental Solutions

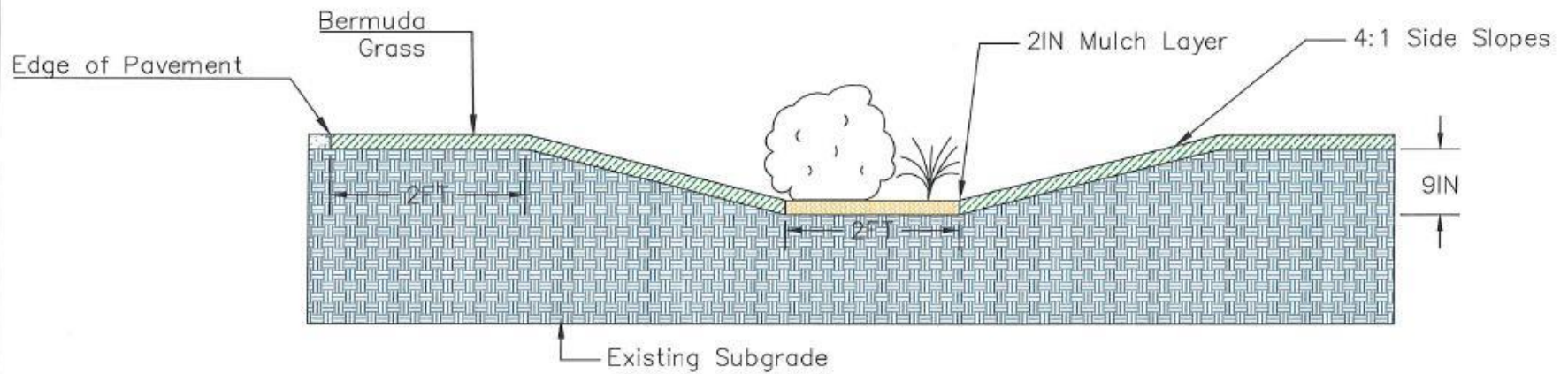


Brian Kramer
Town of Pine Knoll Shores

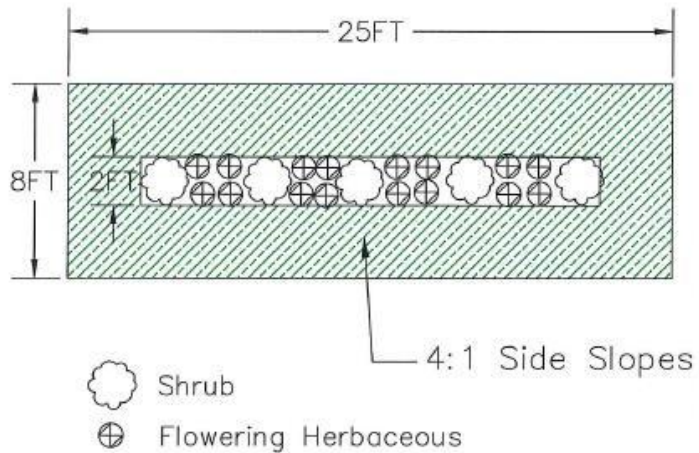
Brian Kramer is the first Town Manager of Pine Knoll Shores. He was hired in May of 2007 after a 23-year career in the U.S. Marine Corps. Brian graduated from Mansfield University in Pennsylvania in 1984 and began a military career that took him from Maine to California and many points in between. His overseas assignments included Japan, Korea, the Philippines, Iceland, and Iraq. Late in his military career he received a Masters of Public Administration from the University of Oklahoma. In Pine Knoll Shores Kramer oversees a staff of 31 people and a General Fund budget of \$4M. He also manages a \$800K municipal water system, Public Safety, Public Works, Planning and Inspections, and Finance.



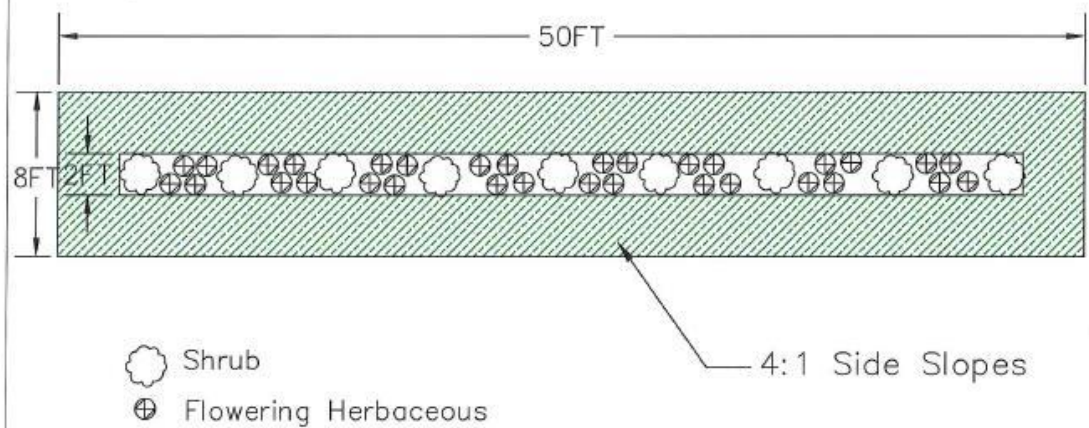
Bioretention Cell Cross Section



Bioretention Cell 1 Plan View



Bioretention Cell 2 Plan View









Coastwatch

[About](#) [Previous Issues](#) [Contact](#) [Subscribe](#) [Q](#)

Barrier Island Buffers: Bald Head Forest Anchors the Island

By ANN GREEN

When a storm hits Bald Head Woods, the maritime forest acts as a buffer.

The canopy has the same aerodynamics as an airplane, explains Hope Sutton, stewardship coordinator and southern N.C. Coastal Reserve and National Estuarine Research Reserve.



MAP BOOK 4 PAGE 15

ALL OF PROPERTY IS LOCATED IN FLOOD ZONES "SHADED X" AND "X" WITH PER FIRM 37206365000. PANEL 6365, MAP EFFECTIVE DATE JULY 16, 2003.

ALWAYS CONFIRM SETBACKS WITH TOWN OF PINE KNOLL SHORES PLANNING DEPARTMENT BEFORE BEGINNING ANY CONSTRUCTION.

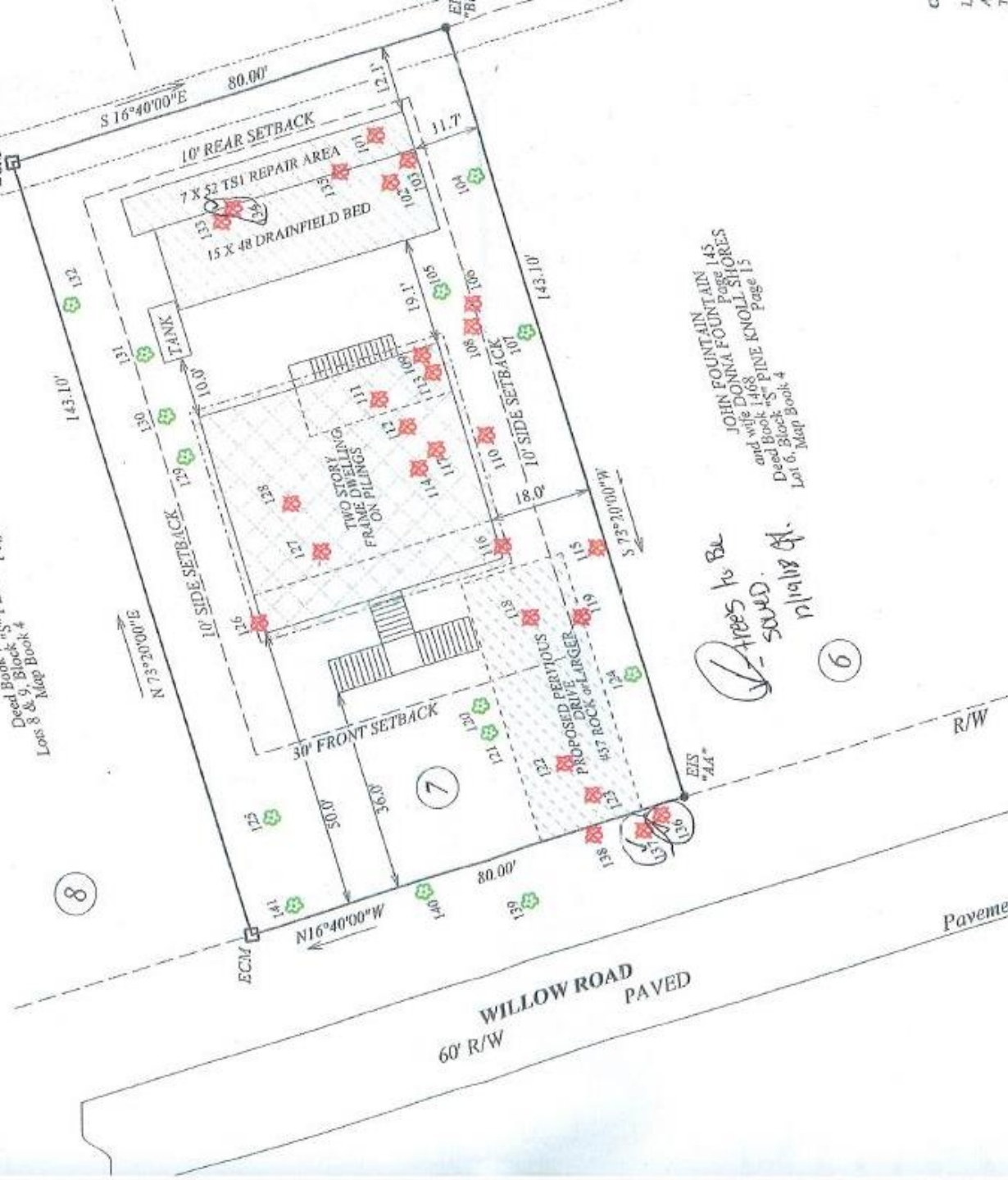
TREES WERE LOCATED ON SEPTEMBER 7, 2018.

JAMES D. MOORE
and wife MICHELLE K. MOORE
Deed Book 1478
Map Book 4
Page 15

A. WATTS BRAGG
Page 995
Deed Book 712
"S" PINE KNOLL SHORES
Loss 8 & 9, Block 4
Map Book 4

EXISTING IRON STAKES (RE-BAR)
EXISTING CONCRETE MONUMENT
RIGHT OF WAY

2 WILLOW RD
NE KNOLL SHORES, NC
28512
N 15 = 8345131.845N2000



JOHN FOUNTAIN
and wife DONNA FOUNTAIN
Deed Book 1468
"S" PINE KNOLL SHORES
Lot 6, Map Book 4
Page 15

trees to be
saved.
12/19/18 dt.

6

