

Panel: Strengthening our Roots



Bob Emory
N.C. Department of
Environmental Quality
Coastal Resources Commission

Bob Emory is a long time New Bern resident and recently retired after a 45 year career with Weyerhaeuser Company, the largest private forest landowner in the United States. He spent the last seventeen years of his career as the Environmental Affairs Manager for Weyerhaeuser's forest operations in the Southern US, where he was responsible for compliance with the Endangered Species Act and the Clean Water Act and for implementation of Weyerhaeuser's sustainability and forest certification commitments. He has served on the Boards of Directors of the North Carolina Coastal Land Trust, the Forest Landowners Association, the North Carolina Forestry Association, and the Institute for Forest Biosciences. He served on the North Carolina Coastal Resources Commission for twenty years from 1994 through 2014 and has recently been appointed to rejoin that Commission. He received a Bachelor of Science in Forestry from Virginia Tech in 1972.

Working Forests

Bob Emory

Coastal Resilience Summit

Havelock, NC

June 11, 2019

Working Forests

Forests that are actively managed to generate revenue from multiple sources including sustainably produced timber and other ecosystem services, and thus are not converted to other land uses such as residential development – World Resources Institute

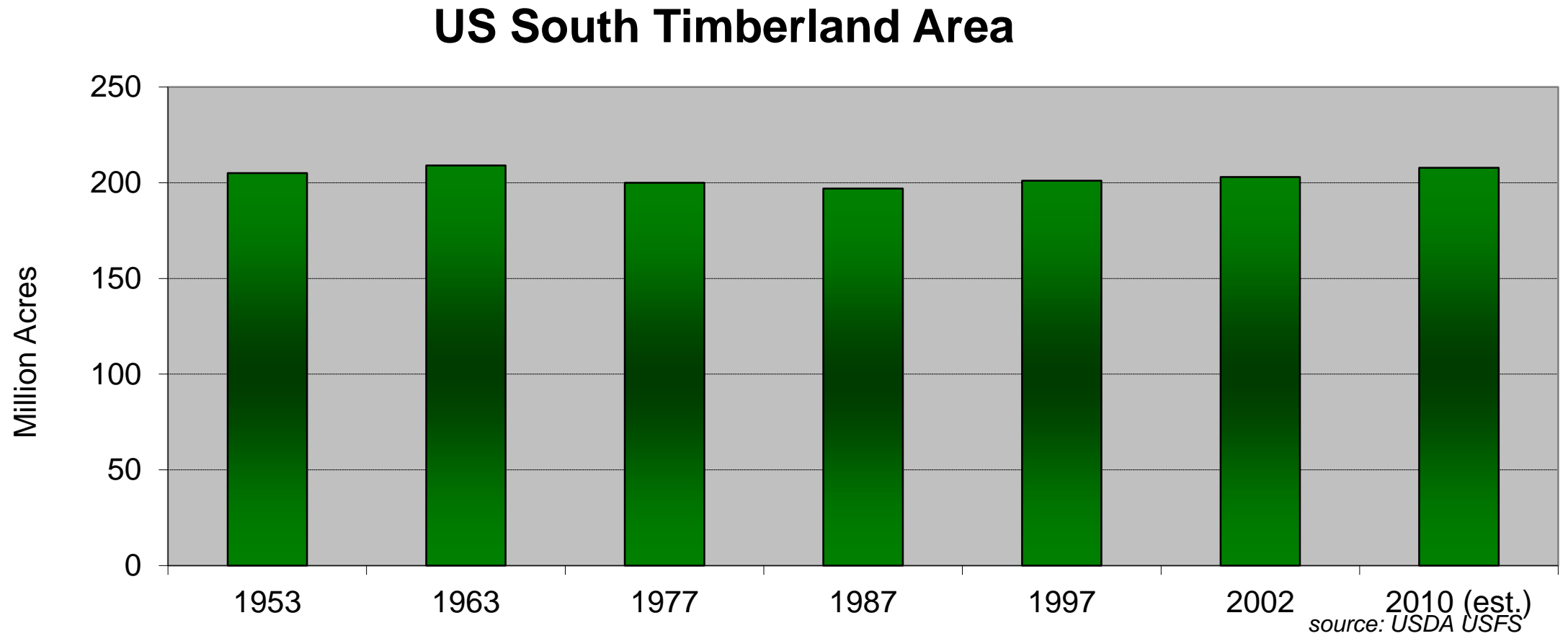
For today – all private forestland capable of producing timber.

Working Forest Contributions

- Economics - particularly in rural areas
 - 72% of forest acreage
 - 95% of harvested timber
- Clean water and air
- Carbon recycling
- Wildlife habitat and refuge
- Recreation
- Provide early successional habitat – complimentary to habitat provided by public forests
- Help hold the landscape together as we adapt to climate change

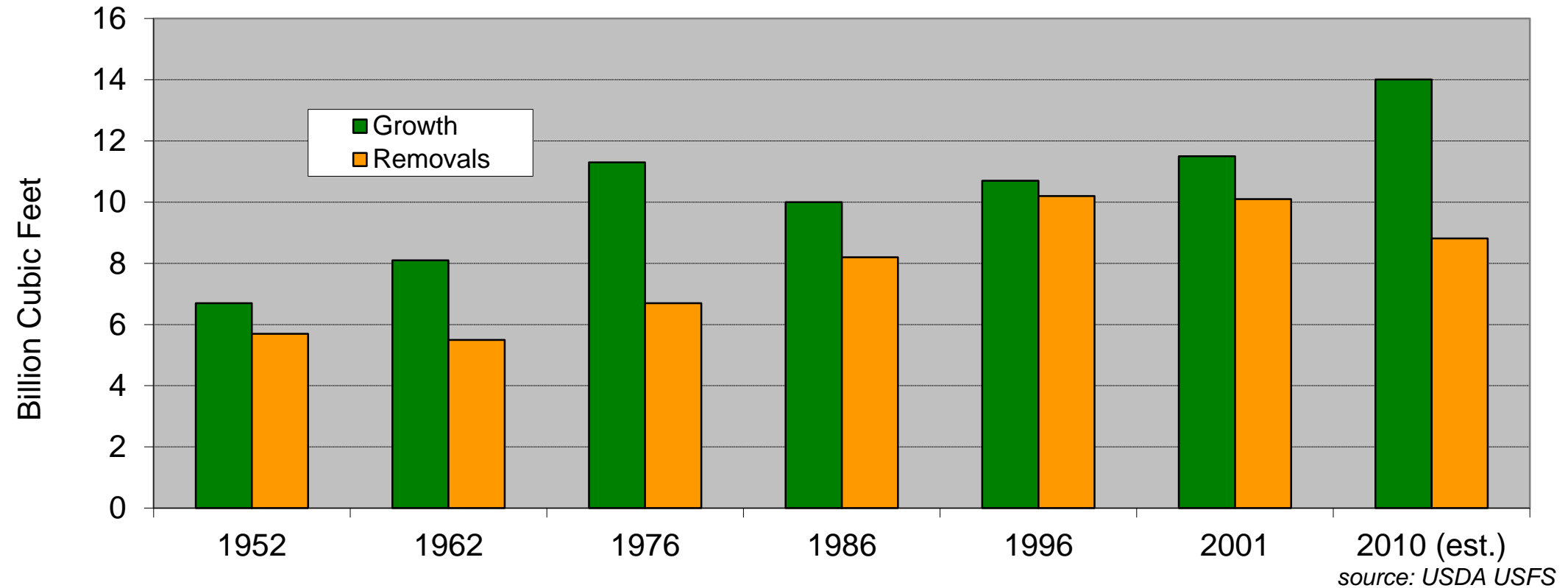
- What keeps them on the landscape?

US South Timberland Area



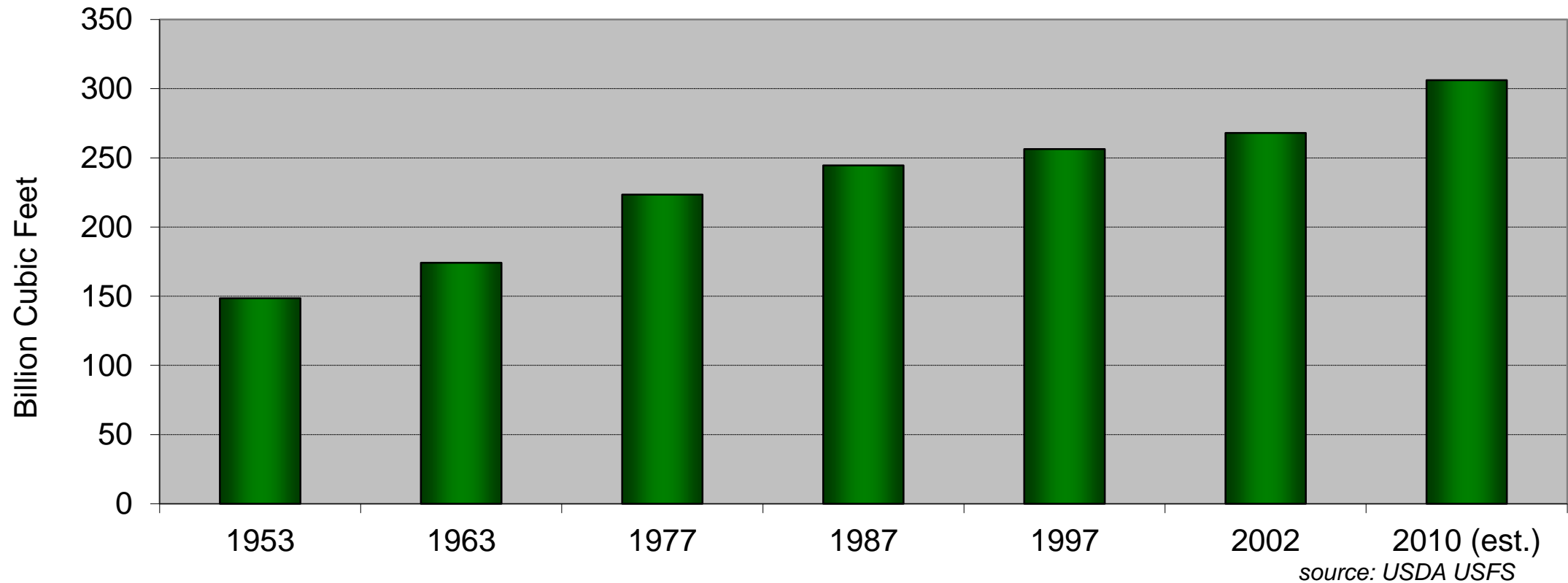
US South Growth vs Removals

US South Growth versus Removals



US South Timber Inventory Volume

US South Timber Inventory Volume



Markets and Working Forests

- Markets provide landowners an incentive to retain their land in forest cover and to invest in management
- The more we use, the more we have – a response to markets
- Sawtimber and small timber for pulp/paper, strand board or wood pellets - markets for these help guide landowner decisions
- Somewhat off topic but critically important

Threats

Sudden

- Hurricane blow down (SC/Hugo)
- Fire
- Flooding

Gradual

- Sea Level Rise
- Drought
- Insects, e.g., Southern Pine Beetle
- Disease
- Lack of management

Solutions

- SLOW DOWN CLIMATE CHANGE!

In the meantime

- Markets – keep forests on the landscape
- Management – thinning reduces stress and damage from insects/disease/fire
- Landowner Assistance/Extension/Education
- Fund the NC Forest Service and Volunteer Fire Departments
- Research – genetics, tree response to CO₂ increase
- Encourage good markets, provide landowners with information and let them do their thing!