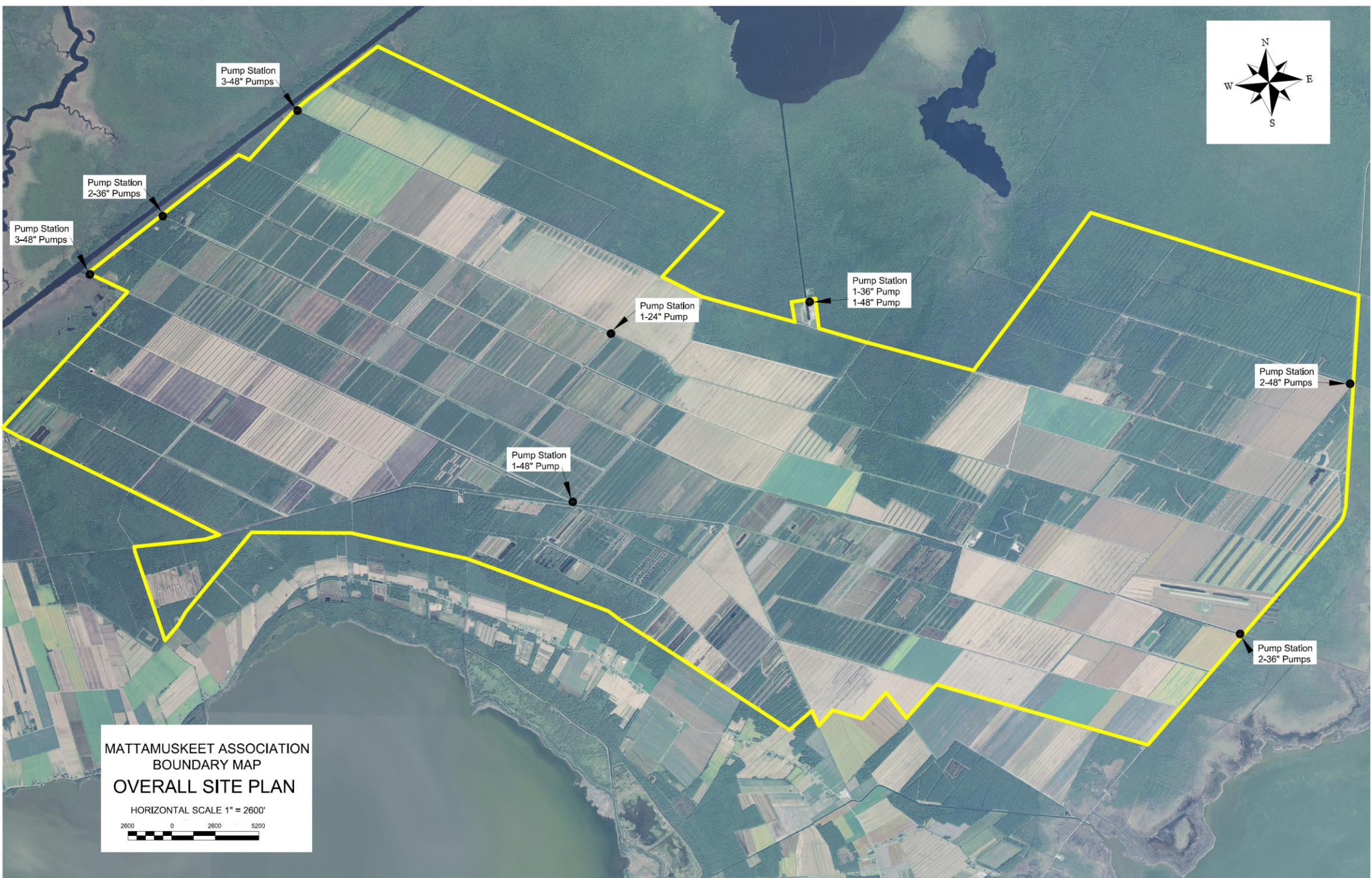
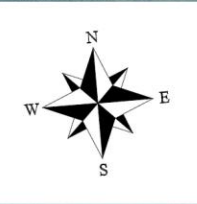


Panel: Strengthening our Roots



Wilson Daughtry
Mattamuskeet
Drainage Association

Wilson Daughtry is a 35 year resident of Engelhard, NC and is currently involved with farming, land development, land hydrology restoration, and pumped drainage system design and installation. Since 1986 he has worked as an operations manager for the Mattamuskeet Association, a 42,312 acre pumped drainage area in northeastern Hyde County. During the past 7 years he has designed and installed numerous drainage pump structures in Hyde, Washington, and Tyrrell counties in mostly agricultural applications. His hydrology restoration work has involved partnerships with the Natural Resource and Conservation Service and the North Carolina Coastal Federation. He currently serves on the Drainage Advisory Board for Hyde County, and the Hyde County Airport Advisory Committee. Wilson graduated from North Carolina State University in 1984 with a Bachelor of Science in Agricultural Economics.



Pump Station
3-48" Pumps

Pump Station
2-36" Pumps

Pump Station
3-48" Pumps

Pump Station
1-24" Pump

Pump Station
1-36" Pump
1-48" Pump

Pump Station
2-48" Pumps

Pump Station
1-48" Pump

Pump Station
2-36" Pumps

MATTAMUSKEET ASSOCIATION
BOUNDARY MAP
OVERALL SITE PLAN

HORIZONTAL SCALE 1" = 2600'









































