

# NEW SHELLFISH PATHOLOGY PROGRAM

Craig A. Harms, DVM, PhD, Dipl. ACZM



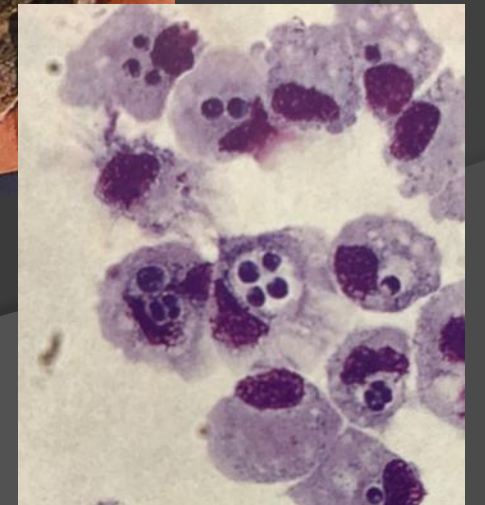
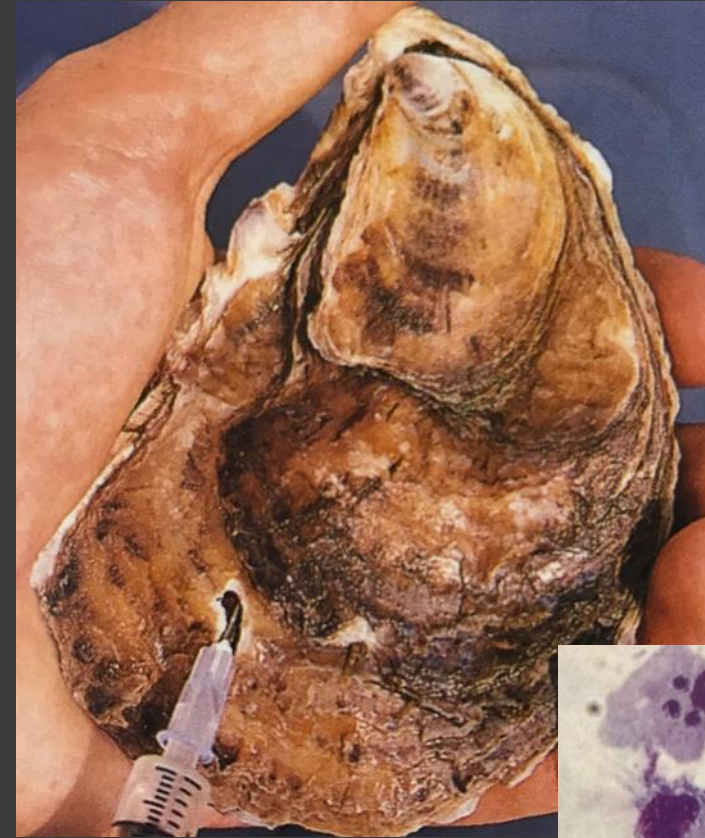
NC STATE  
UNIVERSITY

**CMAST**

The Center for Marine Sciences and Technology

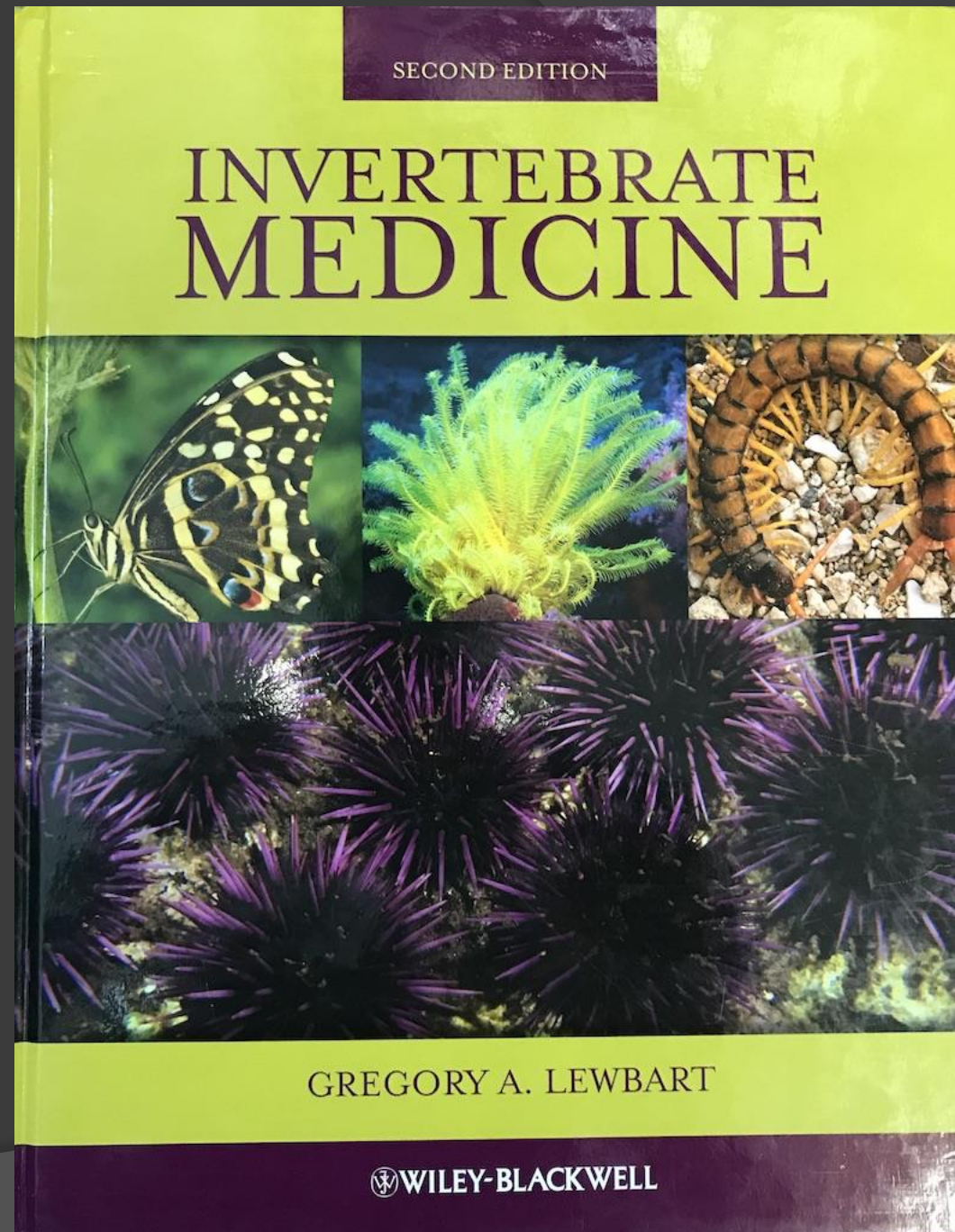
# NC State College of Veterinary Medicine and Shellfish

- Ed Noga – blue crab shell dz, innate immunity of oysters and crabs
- Frank. O. Perkins and Ann Weeks-Perkins – visiting scientists late 1990s, oyster dz and immunity (the “Perkins” of *Perkinsus marinus*/Dermo)



# NC State College of Veterinary Medicine and Shellfish

- Jay Levine – FW mussels
- Greg Lewbart – Invertebrate Medicine text (2008, 2012)
- Dan Dombrowski – Invertebrate Medicine Club
- Center for Marine Sciences and Technology (CMAST) – opened 2000, marine animal health program



# Shellfish Pathologist Position

- ⦿ Identified as priority by Shellfish Initiative
- ⦿ Support for program allocated by legislature last year, to be based at NC State CMAST
- ⦿ Focus on shellfish health
  - Aquaculture and wild/restoration
  - All shellfish, but primarily oyster
  - Known and unknown (potential emerging) diseases
- ⦿ Position has just been filled.....

# Tal Ben-Horin, Ph.D.

- Postdoc URI 2015-current
- Postdoc Rutgers 2013-2015
- Ph.D. UC Santa Barbara 2013
- Coastal marine ecologist specializing in parasitology, and ecological and epidemiological modeling
- Studies how fishing, aquaculture, and restoration activities impact disease risk in wild and cultured oysters, and methods for mitigating disease impacts
- Start date 15 July 2019



# Shellfish Pathology Program Priorities

- Larval and seed testing to be completed in house/state, cutting costs and time
- Expand disease testing/monitoring at restoration sites and wild populations
- Coordinated effort across Atlantic and Gulf coasts to standardize interstate transport regulations
- Farm visits/house calls – extension & outreach, regular sampling
- Research – human activities (aquaculture, fishing, shellfish restoration) influence on disease dynamics
- East Coast Shellfish Research Institute
  - Being revamped with a vision for serving growers to access support for adopting new technologies or diversifying products