



North Carolina Division of Marine Fisheries Shellfish Sanitation and Recreational Water Quality

DEPARTMENT OF ENVIRONMENTAL QUALITY

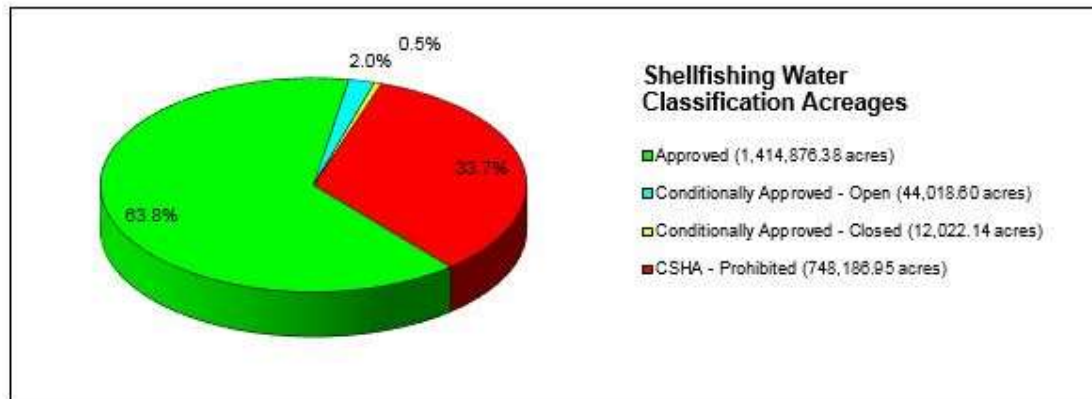
North Carolina Oyster Summit | Shannon Jenkins | 3/12/19



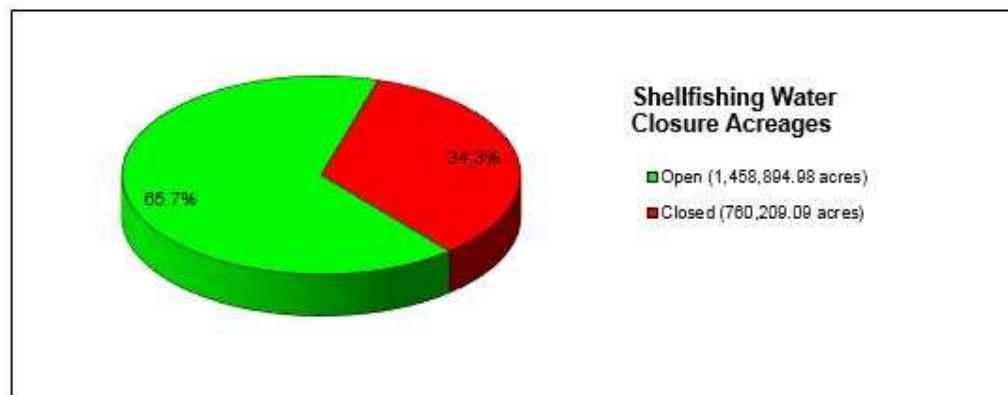
Good Water Quality Needed

- Public Health
- Shellfish Industry



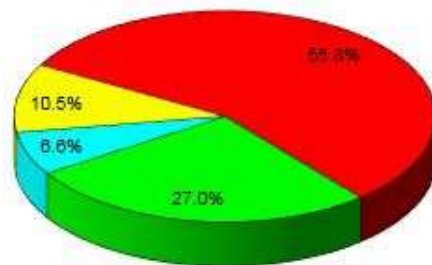


Classification	Acres	Percent of Total
Approved	1,414,876.38	63.8%
Conditionally Approved - Open	44,018.60	2.0%
Conditionally Approved - Closed	12,022.14	0.5%
CSHA - Prohibited	748,186.95	33.7%
Total	2,219,104.07	100.0%



Status	Acres	Percent of Total
Open	1,458,894.98	65.7%
Closed	760,209.09	34.3%
Total	2,219,104.07	100.0%

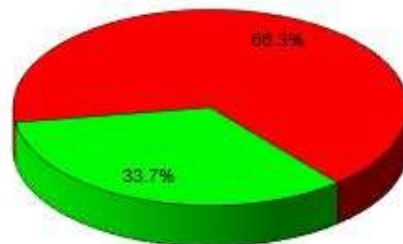




**Shellfishing Water
Classification Acreages**

- Approved (11,576.28 acres)
- Conditionally Approved - Open (2,838.48 acres)
- Conditionally Approved - Closed (4,508.66 acres)
- CSHA - Prohibited (23,891.96 acres)

Classification	Acres	Percent of Total
Approved	11,576.28	27.0%
Conditionally Approved - Open	2,838.48	6.6%
Conditionally Approved - Closed	4,508.66	10.5%
CSHA - Prohibited	23,891.96	55.8%
Total	42,815.38	100.0%



**Shellfishing Water
Closure Acreages**

- Open (14,414.76 acres)
- Closed (28,400.62 acres)

Status	Acres	Percent of Total
Open	14,414.76	33.7%
Closed	28,400.62	66.3%
Total	42,815.38	100.0%



LOCKWOODS FOLLY RIVER AREA

Area A-3 (Map 48)

PROHIBITED TERRITORY

(Prohibited areas are hatched)

COUNTY: BRUNSWICK



(SEE BACK OF MAP FOR AREA DESCRIPTIONS.)

Map 48

Temporary Closures 2017



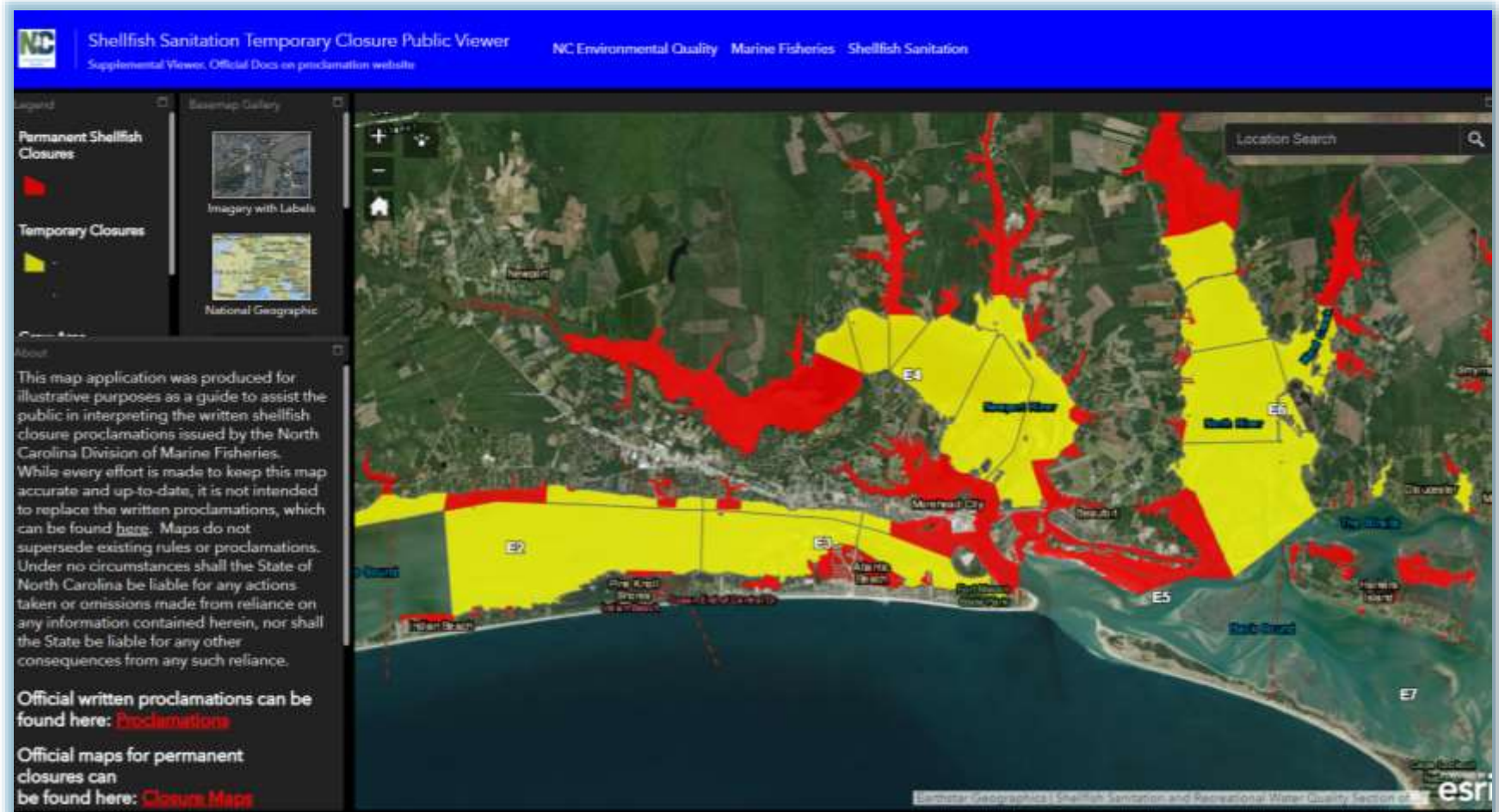
Newport River

- Upper- 103 days due to rainfall (28.2%)
- Lower- 82 days due to rainfall (22.5%)

Lockwoods Folly River

- 123 days due to rainfall (33.7%)

Shellfish Closures



<https://ncdenr.maps.arcgis.com/apps/webappviewer/index.html?id=5759aa19d7484a3b82a8e440fba643aa>

Department of Environmental Quality



Leases in the Topsail Area and Shellfish Harvest Classification

- Bottom Lease
- Water Column
- Approved
- Conditionally Approved - Open
- CSHA - Prohibited
- Conditionally Approved - Closed

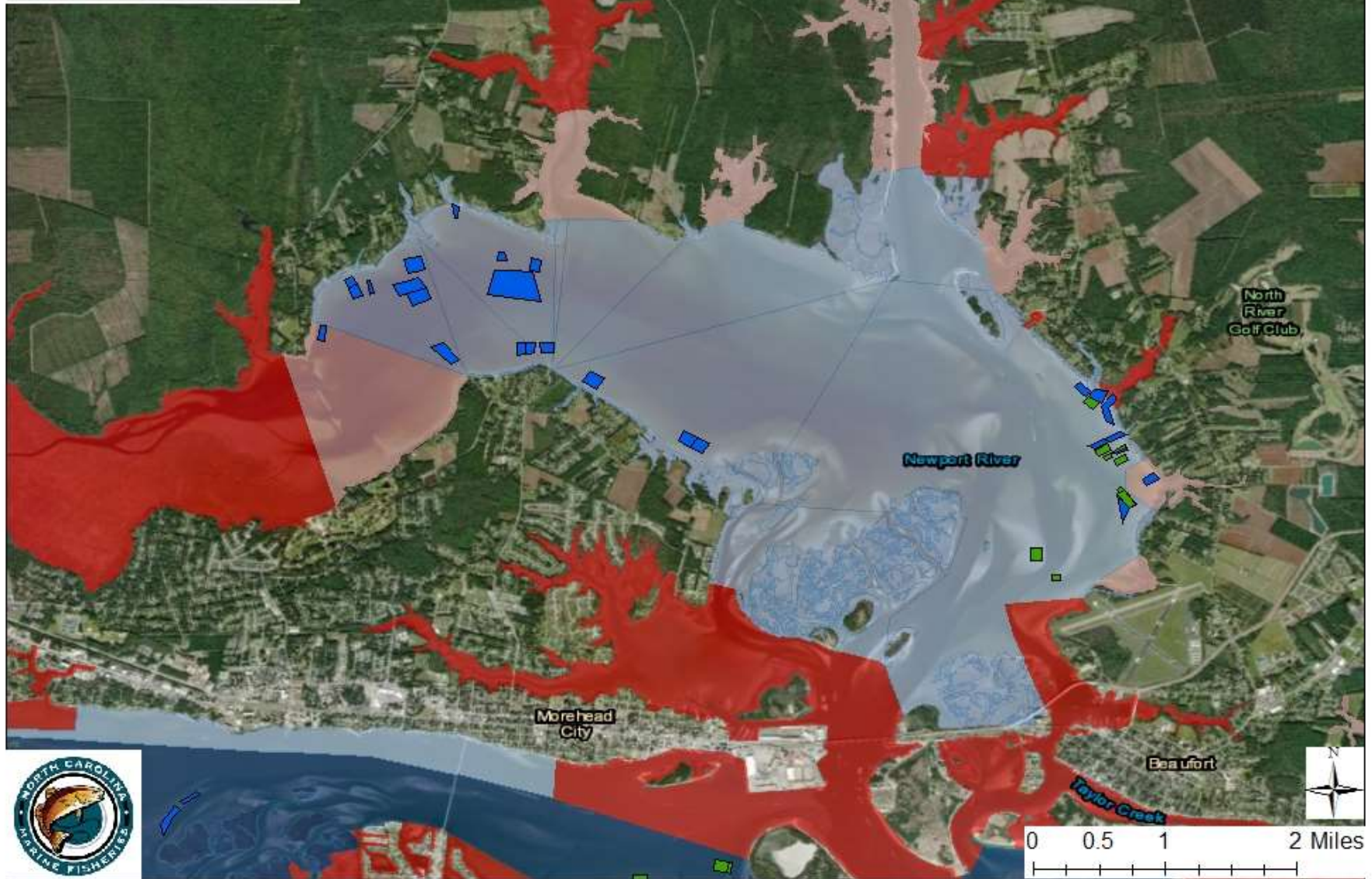


0 0.5 1 2 Miles

Newport River Leases and Shellfish Harvest Classification

Bottom Lease
Water Column

Approved
Conditionally Approved - Open
CSHA - Prohibited
Conditionally Approved - Closed



Days Closed in 2017

(Percentage out of the Year)

Conditionally Approved Open

Closed

