

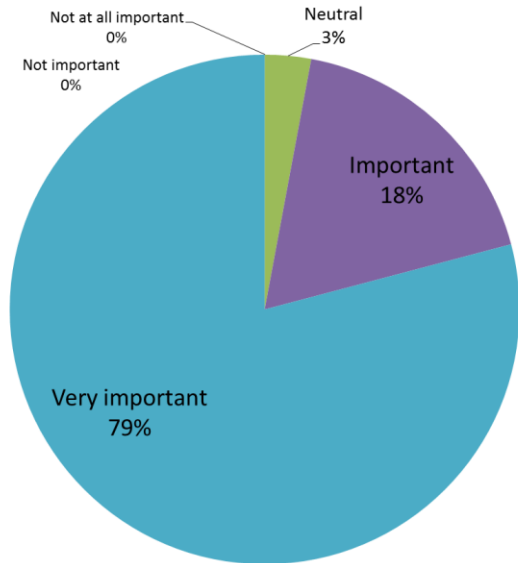


Terminal Groin Information Session  
April 29, 2016

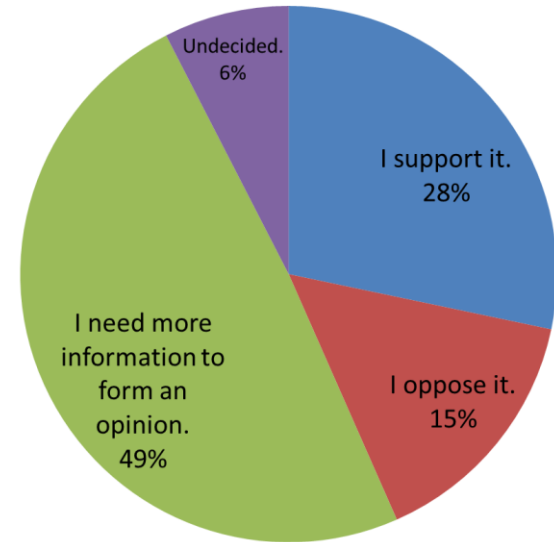


# HBPOA Survey Results

**A healthy beach strand has been said to have 75' of dry sand at high tide. How important is a healthy beach strand to you?**



**What is your position on a terminal groin at the east end of the island?**





# Duke University Survey

## Property Owners' Understanding of Erosion Control on Holden Beach, North Carolina



Prepared for:  
Geoff Gisler  
The Southern Environmental  
Law Center

Ashley Gordon  
Emily Hall  
Hillary Smith  
Justin Pearce  
Melissa Whaling  
Sara Cleaver

25 April 2016

Results of this study indicate a mixed level of understanding of beach erosion and the impacts of terminal groins, but respondents were very interested in learning more about what the proposed terminal groin would mean for Holden Beach.

According to our study, there is a need for further dissemination of educational materials on impacts of groins and clearer statements of costs for the proposed erosion intervention alternatives. Respondents expressed a strong desire to be included in decision-making processes regarding erosion intervention on Holden Beach.





# ATM Beach Monitoring Report

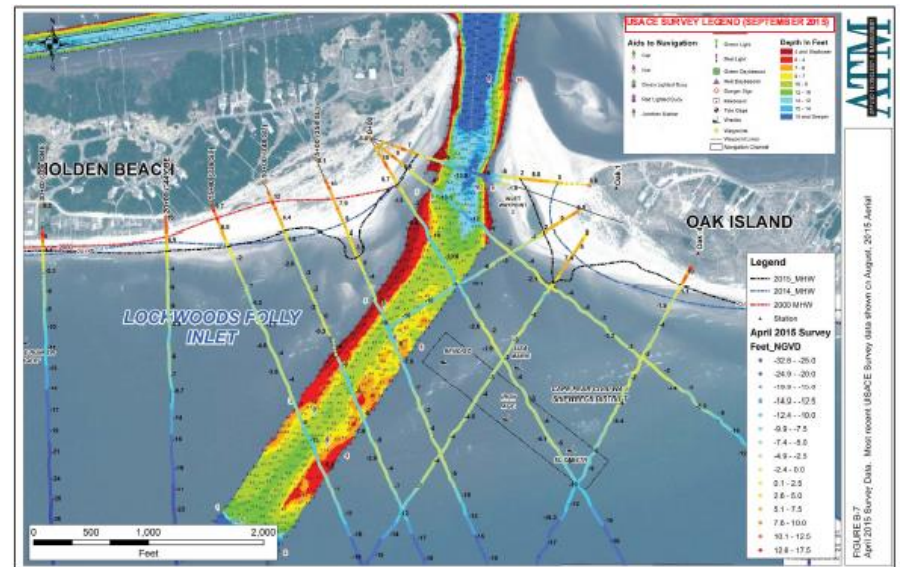
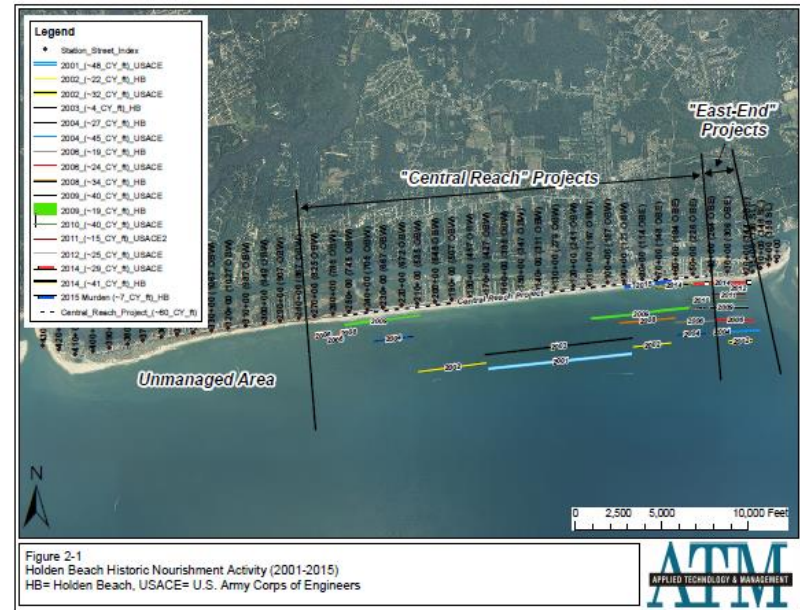
**Holden Beach**

---

**Annual Beach Monitoring Report**

Prepared For:  
Town of Holden Beach, North Carolina

October 2015





# USACE EIS Documents

WILMINGTON DISTRICT

**US Army Corps of Engineers**

Search Wilmington District

[HOME](#)
[ABOUT](#)
[BUSINESS WITH US](#)
[MISSIONS](#)
[LOCATIONS](#)
[CAREERS](#)
[MEDIA](#)
[LIBRARY](#)
[CONTACT](#)

HOME > MISSIONS > REGULATORY PERMIT PROGRAM > MAJOR PROJECTS > HB DEIS

- Regulatory Permit Program
- Regulatory Home
- Public Notices
- Jurisdiction
- Agency Coordination
- Permits
- Major Projects
- Mitigation
- Contact Us

Holden Beach - Terminal Groin for Shoreline Stabilization - Draft EIS

**Holden Beach Draft Environmental Impact Statement (DEIS)**  
 Download Page (Documents are in PDF format. Files will open in new window.)

Name	File Size	Date
Holden Beach DEIS Title, Executive Summary, and Table of Contents	325kb	8/20/15
Holden Beach DEIS Chapter 1 Introduction	825kb	8/19/15
Holden Beach DEIS Chapter 2 Purpose and Need	487kb	8/19/15
Holden Beach DEIS Chapter 3 Project Alternatives	886kb	8/19/15
Holden Beach DEIS Chapter 4 Affected Environment	1,361kb	8/19/15
Holden Beach DEIS Chapter 5 Environmental Consequences	3,426kb	8/19/15
Holden Beach DEIS Chapter 6 Avoidance and Minimization	377kb	8/19/15
Holden Beach DEIS Chapter 7 References	197kb	8/21/15
Holden Beach DEIS Appendix A Scoping Documents	9,575kb	8/19/15
Holden Beach DEIS Appendix B SB151 Legislation	111kb	8/19/15
Holden Beach DEIS Appendix C Inlet Management Plan	1,925kb	8/19/15
Holden Beach DEIS Appendix D Holden Beach Master Plan	31,090kb	8/19/15
Holden Beach DEIS Appendix E Holden Beach Work Plan	9,201kb	8/19/15
Holden Beach DEIS Appendix F ATM Engineering Analysis	37,695kb	8/19/15
Holden Beach DEIS Appendix G Holden Beach Permit Sheets	8,527kb	8/19/15
Holden Beach DEIS Appendix H Holden Beach Resolution	461kb	8/19/15
Holden Beach DEIS Appendix I Lockwoods Folly Inlet Historical Aerial Imagery	8,074kb	8/19/15
Holden Beach DEIS Appendix J Annotated Bibliography of Nearshore and Estuarine Fisheries	160kb	8/19/15
Holden Beach DEIS Appendix K Bird Nesting Data (1972-2014)	437kb	8/19/15
Holden Beach DEIS Appendix L Sea Turtle Nesting Locations (2005-2014)	511kb	8/19/15
Holden Beach DEIS Appendix M Understanding Cost and Benefits	243kb	8/19/15
Holden Beach DEIS Appendix N Central Reach	11,907kb	8/19/15

Table 5.1. Project alternatives.

Alternative #1	No Action (Status Quo)
Alternative #2	Abandon and Retreat
Alternative #3	Beach Nourishment
Alternative #4	Inlet Management and Beach Nourishment
Alternative #5	Short Terminal Groin and Beach Nourishment
Alternative #6	Intermediate Terminal Groin and Beach Nourishment

Table 5.17. Alternative 6 scope of costs and benefits.

Costs (Relative to Status Quo)	
Construction and Maintenance	\$34.41 M
Construction and Maintenance (Present Value)	\$21.97 M - \$36.32 M
Parcels affected	16
Assessed Tax Value of Affected Parcels	\$2.10 M
Infrastructure Replacement Costs	\$101,572
Infrastructure Replacement Costs (Present Value)	\$92,019 - \$80,455
Reduction in tax base	Low/None
Transition costs	Low
Diminished recreation value	Low
Diminished aesthetic value	Intermediate
Environmental Damage	
Public non-use value losses (nature)	Low
Public non-use value losses (Holden Beach)	High
Benefits (Relative to Status Quo)	
Reduction in future nourishment expense	High
Enhanced property value	High
Enhanced Recreation value	Moderate
Environmental Improvement	
Public non-use value (nature)	High
Public non-use value (Holden Beach)	Low




# HBPOA Website

Representing the property owners of Holden Beach, NC

HOME ABOUT HBPOA BEACH REQUIREMENT COMMITTEES CONTACT US


MET THE CANDIDATES MEETINGS PLAYGROUND PROPERTY OWNERS

## HOLDEN BEACH PROPERTY OWNERS ASSOCIATION



- Hot Topics
- JOIN HBPOA
- Yoga Classes and Beach Volleyball
- Beach Ordinance
- Oil and Gas Drilling
- Sewer System Design
- Typical Beach Information
- Wind Energy
- Board's Board and "The Kisser"

### Terminal Groin



The Army Corps of Engineers has released the [Draft Environmental Impact Statement \(DEIS\)](#) for a terminal groin on Holden Beach and hosted a **Public Meeting on September 24**. Comments were accepted through **October 13**. Currently, the Corps of Engineers is reviewing the comments and making the determination whether to issue the permit for the groin or not.

The proposed groin will be 1000' long and have a 120' "T" section at the end. The groin will reach 700' into the ocean with the remaining 300' on the beach and be constructed of 4- to 5-foot diameter granite armor stone. The crest of the groin would be approximately five feet wide and the base would be approximately 40' wide. Total cost of the groin is estimated at \$34,410,000.

We encourage you to review the DEIS and become familiar with it and the appendices.

Coastal and environmental groups are opposed to the groin. The [North Carolina Coastal Federation](#) in conjunction with the Southern Environmental Law Center and Audubon North Carolina has launched a [website](#) explaining their concerns. There are also links to more information on the site.

Our contact at the corps of Engineers was Ms. Emily Hughes, Wilmington Regulatory Field Office, 69 Darlington Ave, Wilmington, NC 28403, or by email to: [Emily.E.Hughes@USACE.army.mil](mailto:Emily.E.Hughes@USACE.army.mil) You can also contact Ms. Hughes at 910-251-4635.

For more information:

3-17-16: Impacts of Terminal Groins on North Carolina's Coasts  
[http://rulespace.lib.duke.edu/dspace/bitstream/handle/10181/5162/Wright\\_Whitney\\_MP](http://rulespace.lib.duke.edu/dspace/bitstream/handle/10181/5162/Wright_Whitney_MP)

CONTACT US:  
[hbpoa@gmail.com](mailto:hbpoa@gmail.com)

JOIN HBPOA  
[Buy Now](#)

FOLLOW OUR POSTS VIA EMAIL  
Email your email address to subscribe to this site and receive notifications of new posts to email.