

Growth and Water Supply

PlanNHC

Dylan McDonnell

Long Range Planner



PlanNHC

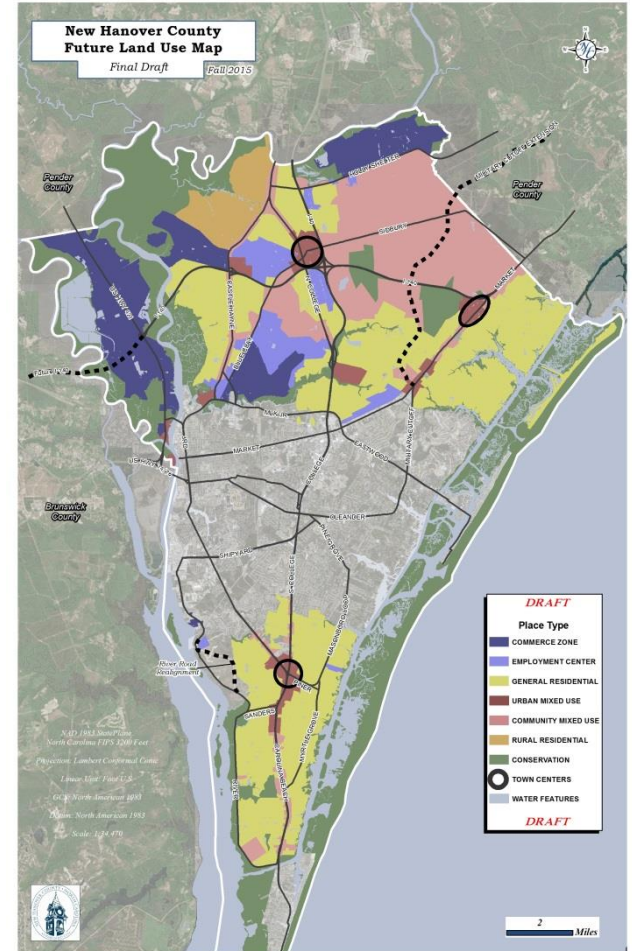
- First true comp plan
- Currently on Chapter 4
- February Completion

✓ Chapter 1: Authentic Participation	Public Engagement Plan
	Work Plan/ Time Line
✓ Chapter 2: Evaluating the Present	Inventory of Data
	Population Projections
	Appoint Citizen Advisory Committee
✓ Chapter 3: Framing the Policy	Theme Committee work process
	Theme Committee Recommendations
	Citizen Advisory Committee Recommendations
Chapter 4: Visualizing the Future	Future Land Use Map
	Exceptional Resource Areas
Chapter 5: Protecting the Coast	Coastal Area Management Act Core Components
Chapter 6: Building the Future	Implementation Plan
	Strategy Map
	CIP Process
	Plan Compliance Toolkit for development



Future Land Use Map

- Population Projection
- Growth Scenarios
- Existing Land Use
- Creation of Place Types



Conservation Place Type

- **Properties acquired for the purpose of conservation:** NC Coastal Land Trust, NHC, CFCC, State of NC, DOT
- **Marshlands & Open Water areas:** Tidal Creeks, HOA open space and subdivision conservation areas adjacent to tidal creeks, Intracoastal Waterway, Cape Fear River & Northeast Cape Fear River, and non-buildable marshlands between Intracoastal Waterway & barrier islands & beach areas (Figure 8 Island).
- **Public Water Supply:** CFPUA Well Head Area (Greeview Ranches)



Conservation Place Type

Properties acquired for the purpose of conservation:

- NC Coastal Land Trust,
- NHC, CFCC,
- State of NC, NCDOT



Conservation Place Type

Marshlands & Open Water areas:

Tidal Creeks, HOA open space and subdivision conservation areas adjacent to tidal creeks, Intracoastal Waterway, Cape Fear River & Northeast Cape Fear River, and non-buildable marshlands between Intracoastal Waterway & barrier islands & beach areas (Figure 8 Island).



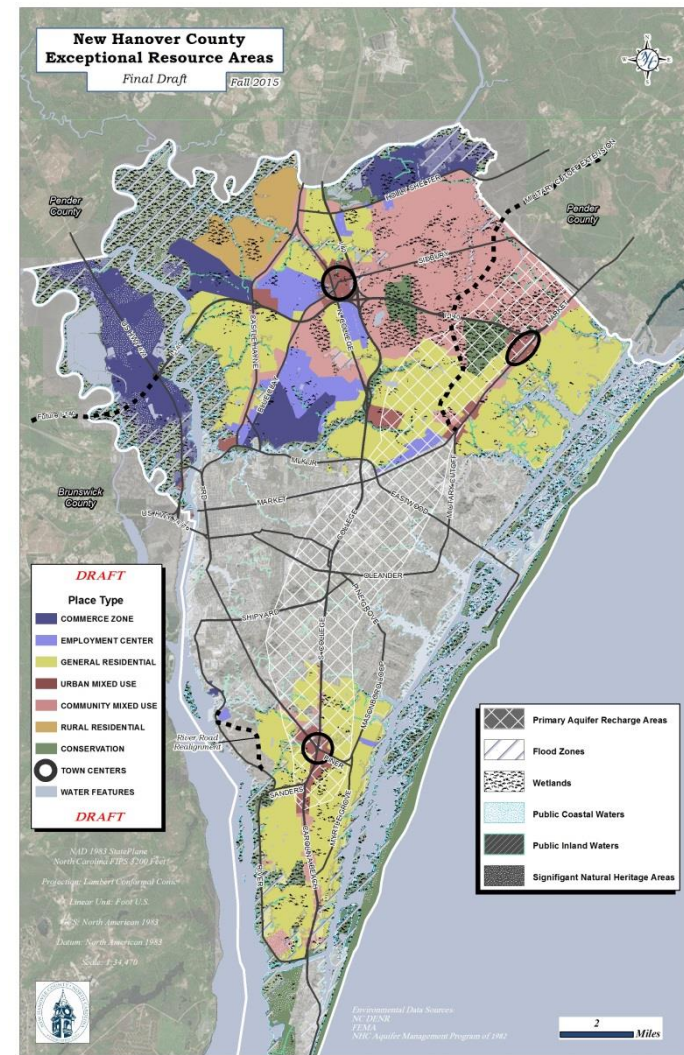
Conservation Place Type

Public Water Supply:
CFPUA Well Head Area
(Greeview Ranches)



Exceptional Resource Areas

- Work in conjunction with Future Land Use Map
- Include CAMA Core Components
 - Aquifer Resource Protection

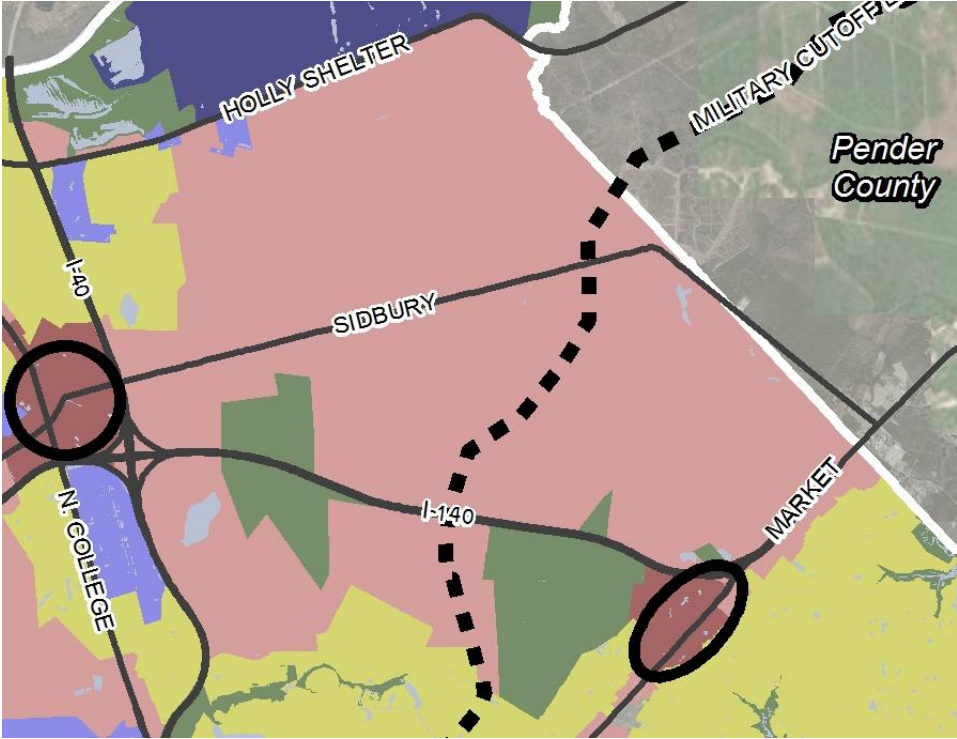


Goals & Implementation

- Preserve and Protect water quality and supply
 - Promote expansion of water and sewer system to protect and enhance water quality.
 - Consider establishing a groundwater and aquifer protection ordinance.



Undeveloped New Hanover County



Thank you

Questions?

